

PROGRAM GUIDE

GSEP Fall 2019/Winter 2020

a publication of the Girl Scouts of Eastern Pennsylvania

PROGRAM LISTINGS

BY GRADE LEVEL



ICON GUIDE

- GSEP Signature Event
- Adventure & Water
- Health & Wellness
- Arts & Culture
- STEM
- Leadership
- Environmental
- Mobile Shop
- G.I.R.L. Agenda

●DAISIES/GRADES K-1

- 20 Airplane Rescue
- 19 Animals in Winter
- 6 Autumn Adventures
- 7 Board Game Gals
- 15 Cirque Mechanics
- 9 Cookie Camp-In
- 10 Daisy Badge Bonanza
- 17 Daisy Car Design Challenge
- 20 Daisy Flower Garden
- 20 Daisy Space Explorer: Moon & Stars
- 18 Eco Learner
- 6 Fall Festival 2.0
- 4 Family Camp
- 4 Girl Scout Expo
- 8 GSEP Journey Weekend: Daisy Outdoor Journey
- 12 Hit the Trail
- 19 Hoot Hike
- 16 Land of the Lenape
- 5 Little Wizards
- 21 Lunar Learners
- 22 Lupe Petal
- 10 Maple Saplings
- 10 Maple Sugaring
- 23 Maple Sugaring
- 19 Model Car Mechanics
- 16 Nature is Neat!
- 14 Pumpkin Painting Palooza
- 8 Real Girls Code
- 11 Real Girls of the World
- 19 S.P.C. yay!
- 7 She and Me Camping Adventure
- 12 Spook-opoly
- 6 Spooky Waters

Check out the Fall 2019/Winter 2020 Program Guide! Pages 4 to 11 highlight programs facilitated by GSEP's Girl Experience team. Pages 11 to 24 feature programs that are run by GSEP's program partners. We can't wait to see you this fall!

- 7 Thanks-A-Lot Trot Troop Fundraiser!
- 4 Tough Cookie Adventure Race
- 8 Winter Camp

●BROWNIES/GRADES 2-3

- 13 911, What's Your Emergency?
- 22 911, What's Your Emergency?
- 18 Amazing Astronomers
- 6 Autumn Adventures
- 23 Blast Off!
- 18 Brownie Adventures
- 5 Brownie Badge Blast
- 10 Brownie Badge Bonanza
- 12 Brownie Cybersecurity Basics
- 12 Brownie Eco-Friends
- 15 Cirque Mechanics
- 11 Citizen Science Stream Study
- 9 Cookie Camp-In
- 23 Cybersecurity Super Sleuths
- 21 Express Yourself
- 6 Fall Festival 2.0
- 4 Family Camp
- 21 Fantastic Fliers
- 14 Fit Fun
- 7 Fling Flyer Fanatics
- 12 Friendship Fun
- 4 Girl Scout Expo
- 6 GSEP Journey Day: Think Like an Engineer
- 8 GSEP Journey Weekend: Brownie Outdoor Journey
- 15 Halloween Harvest Yoga Adventure
- 15 Healthy Me=Healthy Community
- 14 Hikers After Dark
- 12 Hit the Trail
- 19 Hoot Hike
- 16 Land of the Lenape
- 5 Little Wizards
- 10 Maple Saplings
- 10 Maple Sugaring
- 22 Maple Sugaring
- 23 Maple Sugaring
- 13 Night Hikers
- 14 Pumpkin Painting Palooza
- 12 Race Care Engineers
- 8 Real Girls Code
- 11 Real Girls of the World
- 10 Risk Taker Racing
- 23 Robot Inventors
- 19 S.P.C. yay!

- 7 She and Me Camping Adventure
- 10 Space Adventures
- 12 Spook-opoly
- 6 Spooky Waters
- 17 Super Sensory Night Hike
- 7 Thanks A Lot Trot Troop Fundraiser!
- 4 Tough Cookie Adventure Race
- 16 Trekkin' in Nature
- 15 What the Big Idea?
- 8 Winter Camp
- 20 Winter Wildlife

●JUNIORS/GRADES 4-5

- 13 911, What's Your Emergency?
- 17 911, What's Your Emergency?
- 18 Agents of Change
- 18 Amazing Astronomers
- 23 Animal Habitats
- 6 Autumn Adventures
- 13 Behind the Mask
- 23 Blast Off!
- 15 Cirque Mechanics
- 11 Citizen Science Stream Study
- 15 Colonial Days
- 22 Colonial Foodways
- 9 Cookie Camp-In
- 9 Crane Design Challenge
- 23 Cybersecurity Super Sleuths
- 13 Empowering Girls
- 18 Entertainment Technology Overnight
- 6 Fall Festival 2.0
- 4 Family Camp
- 17 Fitness for the Body & Mind
- 13 Flower Power
- 15 Geocache Explorers
- 21 Girl Power
- 4 Girl Scout Expo
- 7 GSEP Journey Day: Get Moving
- 6 GSEP Journey Day: Think Like an Engineer
- 8 GSEP Journey Weekend: Junior Outdoor Journey
- 9 Happy Campers
- 17 Healthy Meals
- 18 History in the Making
- 5 Junior Badge Blast
- 11 Junior Balloon Car Design Challenge
- 21 Junior Citizen Scientists
- 22 Junior Detective
- 12 Junior Jeweler
- 11 Junior Water Explorers

22 Kick Flip
16 Land of the Lenape
10 Maple Saplings
10 Maple Sugaring
22 Maple Sugaring
23 Maple Sugaring
19 Martin Guitar...Music to My Ears
5 Muggle Magic
13 Night Hikers
18 Paddle Boat Racers
16 Photo Explorers
20 Playing the Past Overnight
19 Product Designers
14 Pumpkin Painting Palooza
14 Rad Robotics
8 Real Girls Code
11 Real Girls of the World
19 S.P.C. yay!
17 Savvy Shopper
8 She and Me Weekend Away
9 S'more Snow
23 Solve the Case
12 Spook-opoly
6 Spooky Waters
15 Staying Fit
11 Staying Fit with the KD's
17 Super Sensory Night Hike
7 Thanks A Lot Trot Troop Fundraiser!
4 Tough Cookie Adventure Race
7 Treasure Hunters
8 Winter Camp
10 Winter Carnival
20 Winter Wildlife

● CADETTE/GRADES 6-8

4 Adventure Seekers
22 Amazing Relationships
12 Asian Outdoor Art
6 Autumn Adventures
13 Behind the Mask
4 Bike the Perk
5 Cadette Badge Blast
6 Caving Experience
15 Cirque Mechanics
16 Climb On!
15 Club Philly Forensics
6 Colorful Chemistry
17 Comics & Cartooning
17 Comparison Shopping
19 Confidence with the Kappa Deltas
8 Cookie Captains
18 Courageous Climbers
20 Courageous Climbers
16 Digi Girlz Women in Coding
22 Eating for You!
21 Eco Explorer
13 Empowering Girls
16 Empowerment Hike
4 Family Camp
13 Fly, Fly Away!
6 GSEP Journey Day: aMaze!
22 Kick Flip
19 Laugh Out Loud

22 Life is aMaze!
10 Maple Saplings
9 Maple Sugar Program Leaders
10 Maple Sugaring
23 Maple Sugaring
19 Martin Guitar...Music to My Ears
13 Night Hikers
16 Programmer Prodigies
6 Real Rocks Mocanaqua
4 River Adventure
22 Robot Sensor Design
15 Science of Happiness
9 Snow Splash!
6 Spooky Waters
5 Sundae Sunday
14 Terrific Trees
7 Thanks A Lot Trot Troop Fundraiser!
4 Tough Cookie Adventure Race
7 Treasure Hunters
22 Tree-mendous Trees
13 Water Safety 101
8 Winter Camp
10 Winter Carnival

● SENIORS/GRADES 9-10

14 AAA Girl Scouts Auto Learn
4 Adventure Seekers
6 Autumn Adventures
13 Behind the Mask
4 Bike the Perk
11 Blue Mountain Adventurers
14 Business Etiquette
6 Caving Experience
17 Celebrate Sisterhood
15 Cirque Mechanics
16 Climb On!
21 Climb On!
15 Club Philly Forensics
21 College All-Stars
6 College Tour: Berks County
7 College Tour: Lehigh Valley
8 Cookie Captains
18 Courageous Climbers
20 Courageous Climbers
18 Cross Trainers
20 Cross-training
16 Digi Girlz Women in Coding
16 Empowering Hike
20 Extreme First Aid
4 Family Camp
13 Fly, Fly Away!
5 GSEP Journey Day: Mission Sisterhood
10 GSEP Journey Day: Think Like an Engineer
20 It's a Girltopia
22 Kick Flip
12 Local Locavores
10 Maple Saplings
9 Maple Sugar Program Leaders
10 Maple Sugaring
23 Maple Sugaring
19 Martin Guitar...Music to My Ears
19 Mission: Sisterhood

6 Real Rocks Mocanaqua
4 River Adventure
14 Science of Style
9 Snow Splash!
6 Spooky Waters
5 Sundae Sunday
7 Thanks A Lot Trot Troop Fundraiser!
23 The Power of Sisterhood
4 Tough Cookie Adventure Race
7 Voice Your Vote
13 Water Safety 101
8 Winter Camp
10 Winter Carnival

● AMBASSADORS/GRADES 11-12

14 AAA Girl Scouts Auto Learn
4 Adventure Seekers
6 Autumn Adventures
13 Behind the Mask
4 Bike the Perk
11 Blue Mountain Adventurers
6 Caving Experience
17 Celebrate Sisterhood
15 Cirque Mechanics
16 Climb On!
21 Climb On!
15 Club Philly Forensics
21 College All-Stars
6 College Tour: Berks County
7 College Tour: Lehigh Valley
8 Cookie Captains
18 Courageous Climbers
20 Courageous Climbers
13 Credit Crusaders
18 Cross Trainers
16 Empowerment Hike
20 Extreme First Aid
4 Family Camp
13 Fly, Fly Away!
5 GSEP Journey Day: Mission Sisterhood
10 GSEP Journey Day: Think Like an Engineer
20 It's a Girltopia
22 Kick Flip
10 Maple Saplings
9 Maple Sugar Program Leaders
10 Maple Sugaring
23 Maple Sugaring
19 Martin Guitar...Music to My Ears
19 Mission: Sisterhood
14 OG Photographers
6 Real Rocks Mocanaqua
4 River Adventure
9 Snow Splash!
6 Spooky Waters
5 Sundae Sunday
7 Thanks A Lot Trot Troop Fundraiser!
23 The Power of Sisterhood
4 Tough Cookie Adventure Race
7 Voice Your Vote
13 Water Safety 101
8 Winter Camp
10 Winter Carnival

Family Camp

FRIDAY, AUGUST 30, 5PM-MONDAY, SEPTEMBER 2, 10AM

Camp Mosey Wood, White Haven

Grades: All Ages

Cost: \$95/person
(Children Under 2 Free)

Enjoy a weekend of fun and relaxation for your entire family! Parents, sisters, brothers, grandparents, and other relatives are invited to Camp Mosey Wood to participate in organized activities, such as swimming, boating, hiking, games, and crafts. Attendees can also enjoy other activities independently. Activity specialists will be on hand to guide you through archery (2nd grade and above) and the high-ropes challenge course (6th grade and above), with lifeguards overseeing swimming and boating. Adults must supervise children during the event; one adult must register for every three children. *Includes accommodations and all meals served in the Dining Hall. Register at <https://gsepfamilycamp2019.eventbrite.com>.

Tough Cookie

Adventure Race

**SATURDAY, SEPTEMBER 7
7:30-9AM CHECK-IN
10AM RACE START**

Camp Laughing Waters, Gilbertsville

Grades: All Ages

Cost: \$30/person through August 15
\$40/person through August 29

Come to the 3rd annual Tough Cookie Adventure Race! Whether it's your first year participating in the race, or your third, the adventure is sure to be new for everyone! Grab your parents and siblings, too! With your team of two or four people, run, bike, and use a map to navigate your way from point to point during this two-hour orienteering race. While traveling point to point, seek out

adventure challenges to gain more points. You may get wet or muddy, but you are guaranteed to have fun. Afterward, enjoy a picnic lunch (self-provided). Spend the day at camp from 1-4pm for a Camp Fun Day! Try your hand at archery (2nd grade and up), disc golf, gaga, volleyball or rock climbing (4th grade and up). Note: An adult must be registered and participate with a team when the team members are under age 12. Register at gseptoughcookieadventurerace2019.eventbrite.com

Looking for the full camp experience? Stay at camp the night before! Space is limited, so register early.

Family Tents: \$40/tent for 4 people

Troop Tents: \$80/2 tents for 4 girls and up to 4 adults

Cabin: \$100/cabin for 1 family/troop unit up to 10 people

*Adults must be present for overnight camping.

Bike the Perk

SUNDAY, SEPTEMBER 15, 10AM-3PM

**Perkiomen Trail Head
Pawlings Road and Station Road,
Phoenixville**

Grades: 6-12

Cost: \$20/girl
\$5/adult

Get your bike out and take a 20-mile trek with GSEP! Talk about what you need to ride on the trail, basic bike repair, and then cycle out on your adventure. Girls must bring proper fitting helmets and a geared bike in good condition. Individual girls are welcome. Girls should bring a non-perishable lunch and water. A simple snack will be provided. Group will begin at the Pawlings Road trail head and end at Green Lane Park. Arrangements for transportation should be made accordingly.

Adventure Seekers

FRIDAY, SEPTEMBER 20, 7PM-SUNDAY, SEPTEMBER 22, 4PM

Camp Mosey Wood, White Haven

Grades: 6-12

Cost: \$117/girl
\$95/adult

Adventure on land, in the water, and through the air! What more can you ask for? Spend Saturday at camp aiming straight at the archery range, paddling across the pond, and climbing to new heights as you tackle the multi-tiered challenge tower and soar through the air on dueling zip lines. On Sunday, head out for a day of white-water rafting

on the Lehigh River! All troops must meet girl-adult ratios for their group. Individual girls must be accompanied by a registered adult. All adults must have a satisfactory background check to participate in the program. *Includes lodging, Friday snack, all meals on Saturday in the Dining Hall, and a cold breakfast and packed lunch on Sunday. Includes four hours of activities on Saturday and rafting on Sunday. Cadettes earn your Archery badge, Seniors earn your Paddling badge, and Ambassadors complete steps 3, 4, and 5 of the Ultimate Recreation Challenge badge. Troop responsible for transportation from camp to Lehighton for rafting Sunday.

Girl Scout Expo

SATURDAY, SEPTEMBER 21, 9AM-12PM

**Temple University
1801 N. Broad Street, Philadelphia**

Grades: K-5

Cost: Free

Girl Scouts are **G.I.R.L.s** (**go-getters, innovators, risk takers, and leaders**)! Join us at Temple University to sample all of the fun activities that Girl Scouts and our program partners have to offer. You'll even complete steps to earn your very first badge and leave with a special event patch to put on your Girl Scout vest or sash. All girls must be accompanied by an adult. *Includes special event patch.

River Adventure

SUNDAY, SEPTEMBER 29, 10AM-4PM

**Northbrook Canoe Company
1810 Beagle Road, West Chester**

Grades: 6-12

Cost: \$50/girl
\$40/adult

Spend your day canoeing down the scenic Brandywine River. You'll paddle on a four-hour adventure down river allowing extra time to relax, eat a picnic lunch and spend quality time with your sister Girl Scouts. Please bring your own bagged lunch and water. All troops must meet girl-adult ratios for their group. Individual girls must be accompanied by a registered adult. Lifeguards will be provided.

REGISTER ONLINE
see page 25 for more details.
you can attend most events
without your troop!

Sundae Sunday ●●●

SUNDAY, SEPTEMBER 29, 12:30-3PM

Camp Laughing Waters, Gilbertsville

Grades: 6-12

Cost: \$17/girl

Create GSEP's Halloween extravaganza for younger Girl Scouts! Come to this planning event for Autumn Adventures and Spooky Waters, to help prepare for the day and learn your roles for the event. Volunteer roles include leading workshops like sing-alongs, tattoos, arts and crafts, games, and designing and performing spooky skits (Spooky Waters only, troops only). By participating in this you will earn Service to Girl Scouting hours while enjoying some tasty ice cream too! Cadettes, Seniors, and Ambassadors interested only need to register for Sundae Sunday. Girls must be able to attend the Autumn Adventures/Spooky Waters event held October 26th. All Troops must come with Safety Activity check point adults. Adults will also be asked to participate in facilitation of the event. Individual girls are welcome. *Includes ice cream at planning meeting, as well as lunch and dinner at event and event patches at Autumn Adventures/Spooky Waters.

Brownie Badge Blast ●

FRIDAY, OCTOBER 4, 7PM - SUNDAY, OCTOBER 6, 10AM

Camp Mosey Wood, White Haven

Grades: 2-3

Cost: \$67/girl

\$40/adult

The outdoors are in and it's time to go! How many legs does an insect have and what can I discover hiking through nature? What new games can I learn on the bouldering wall, and how many strokes does it take to paddle across the lake? These are just some questions that will be answered this weekend as you earn three badges. All troops must meet girl-adult ratios for their group. Individual girls must be accompanied by a registered adult. All adults must have a satisfactory background check to participate in the program. *Includes lodging, all meals, Friday Snack through Sunday breakfast, activities, and the Bugs, Outdoor Adventurer, and Eco Friend badges.

Junior Badge Blast ●

FRIDAY, OCTOBER 4, 7PM - SUNDAY, OCTOBER 6, 10AM

Camp Mosey Wood, White Haven

Grades: 4-5

Cost: \$72/girl

\$40/adult

The outdoors are in and it's time to go! This weekend you'll need both your brain and body power, so bring your G.I.R.L. spirit. Come to enjoy a weekend at camp and earn three badges while exploring how things work in the world around you! Design, build and then test your paddle boat on the lake. Design, build and then race your balloon car. Spend time in a boat paddling on the lake and climb to new heights on the rock wall. All troops must meet girl-adult ratios for their group. Individual girls must be accompanied by a registered adult. All adults must have a satisfactory background check to participate in the program. *Includes lodging, all meals, Friday snack through Sunday breakfast, activities, and Paddle Boat Design Challenge, Balloon Car Design Challenge, and Crane Design Challenge badges.

Cadette Badge Blast ●

FRIDAY, OCTOBER 4, 7PM - SUNDAY, OCTOBER 6, 10AM

Camp Mosey Wood, White Haven

Grades: 6-8

Cost: \$87/girl

\$40/adult

The outdoors are in and it's time to go! Come enjoy a weekend at camp and earn two badges while exploring the world around you! Learn Leave No Trace Principles, paddle across the lake on a boat, climb to new heights on the challenge tower, and zoom across the lake on the zip lines. All troops must meet girl-adult ratios for their group. Individual girls must be accompanied by a registered adult. All adults must have a satisfactory background check to participate in the program. *Includes lodging, all meals, Friday snack through Sunday breakfast, activities, and the Primitive Camper and Trailblazing badges.

GSEP Journey Day: Mission Sisterhood ●●

TUESDAY, OCTOBER 8, 3:30-6:30PM

Brandywine Red Clay Alliance

1760 Unionville Wawaset Rd, West Chester

Grades: 9-12

Cost: Free

Take the next step in your Girl Scout leadership and complete the Mission: Sisterhood Journey! Explore relationships, self-value, and social issues facing women today. Then plan your own Take Action project to help solve the issues we all face. This program will complete most of the "It's Your Story- Tell it! Mission: Sisterhood Journey", with assistance planning your Take Action Project. Girls will complete Take Action Projects after the program. This is a girl only program.

Little Wizards ●●

SATURDAY, OCTOBER 12, 9AM-12:30PM

Camp Shelly Ridge, Miquon

Grades: K-3

Cost: \$24/girl

Mystery surrounds us at camp! Join us as we recreate the magical world of Harry Potter. Design your own magic wand, search for magical creatures, and create chemistry-based magic. Costumes are encouraged but not required. All troops must meet girl-adult ratios for their group. Individual girls must be accompanied by a registered adult. *Includes magical snack and event patch.

Muggle Magic ●

SATURDAY, OCTOBER 12, 1:30-5PM

Camp Shelly Ridge, Miquon

Grades: 4-5

Cost: \$29/girl

Magic surrounds up at camp! Join us as we recreate the magical world of Harry Potter. Design your own magic wand, search for magical creatures, create chemistry-based magic, and try your hand at archery. Costumes are encouraged but not required. All troops must meet girl-adult ratios for their group. Individual girls must be accompanied by a registered adult. *Includes magical snack and event patch.

SIGNATURE EVENTS

Look out for GSEP's Signature Events, which appear with this icon. You won't want to miss out on these!



GSEP Journey Day: Think Like an Engineer ●●

MONDAY, OCTOBER 14, 8AM-4PM

Camp Mountain House, Allentown

Grades: 2-5

Cost: \$37/girl

Attention Brownies and Juniors! Are you looking for a fun, relaxing break from school? Come to Camp Mountain House and enjoy a day filled with hands-on activities while working toward your Think Like an Engineer Award! Learn to think and solve problems just like an Engineer as you work with your sister Girl Scouts to complete design challenges. Please bring a bagged lunch. This is a girl-only program. *Includes afternoon snack and the Think Like an Engineer Journey Award.

Colorful Chemistry ●

SATURDAY, OCTOBER 19, 9AM-12PM

Camp Valley Forge, Valley Forge

Grades: 6-8

Cost: \$17/girl

Kick off National Chemistry Week by exploring the science behind some colorful creations! Create gooey slime, mix up some bath bombs, and write secret messages to your friends in invisible ink. All troops must meet girl-adult ratios for their group. Individual girls must be accompanied by a registered adult. *Includes Chemistry patch.

College Tour: Berks County ●●

SATURDAY, OCTOBER 19, 8AM-1PM

Fairgrounds Square Mall

3050 N. 5th Street Highway, Reading

Grades: 9-12

Cost: \$20/girl
\$10/adult

From the coolest dorm rooms to the best places to study on campus, hop aboard the college tour bus and get an inside look at some of Berks County's top colleges and universities. You'll board a bus at the Fairgrounds Square Mall and travel to meet with current students at local schools to get the inside scoop on admissions, majors, and tuition costs. Please bring a bagged lunch. All troops must meet girl-adult ratios for their group. Individual girls must be accompanied by a registered adult. *Includes event patch, transportation from service center to each college and guided tours at each college.

Caving Experience ●●●●

SUNDAY, OCTOBER 20, 11AM-5PM

Sheetz - Shippensburg

8000 Olde Scotland Road, Shippensburg

Grades: 6-12

Cost: \$35/girl
\$30/adult

Come explore a natural cave! Learn how to safely move through a cave as you explore the depths of one of nature's finest wonders alongside a speleological expert. All participants should be within the allowable height-weight ratio. Check the Program/Event Registration for the chart. Please bring a bagged lunch and water. The group will travel to a pizza shop for dinner after the program. All troops must meet girl-adult ratios for their group. Individual girls must be accompanied by a registered adult.

Autumn Adventures ●●●●●

SATURDAY, OCTOBER 26, 11:30AM-2:30PM

Camp Laughing Waters, Gilbertsville

Grades: All Ages - Families Welcome

Cost: \$20/girl
\$8/adult

Be your own tour guide as you travel around camp to various autumn activities. Parents, sisters, brothers, cousins, and friends-join your Girl Scout for a captivating autumn adventure. Create fall crafts, play Halloween games, and sparkle with glitter tattoos. See how far your apples can fly when you go "apple chunking." Enjoy a thrilling game of Gaga or make your own scarecrow! Choose what you want to do when you want to do it. Lunch will be served from 12:30pm-1:15pm, and activities will be open 11:30-2:30pm. Event is rain or shine, warm or cold. This event is scare free. All troops must meet girl-adult ratios for their group. FAMILIES ARE WELCOME: Adults must supervise their children during the event and one adult must register for every three children. Cadettes, Seniors, and Ambassadors interested in helping to plan and run Autumn Adventures must register for and attend Sundae Sunday. *Includes lunch meal, activities and an event patch.

Spooky Waters

SATURDAY, OCTOBER 26, 4-7:30PM

Camp Laughing Waters, Gilbertsville

Grades: All Ages

Cost: \$20/girl
\$8/adult

Spooky adventures abound at GSEP's annual Halloween festival at Camp Laughing Waters! Parents, sisters, brothers, cousins, and friends-join your Girl Scout for a spooky evening. Choose your own adventure, from "apple chunking", Halloween crafts, glow-in-the-dark Gaga, and Spooky Skits put on by other Girl Scouts. Pick the activities you want to do! Dinner will be served from 5:30 -6:15pm followed by a costume parade and contest! All activities will be open from 4-7:30pm. This event is rain or shine, warm or cold. This event is our spooooky event. For Halloween fun without the spooky atmosphere, attend Autumn Adventures earlier in the day. If you are coming as a troop, all troops must meet Safety Activity Checkpoint ratios. FAMILIES ARE WELCOME: Adults must supervise their children during the event and one adult must register for every three children. Cadettes, Seniors, and Ambassadors interested in helping to plan and run Spooky Waters must register for and attend Sundae Sunday. *Includes dinner meal, activities and an event patch.

Real Rocks Mocanaqua ●●●●

SUNDAY, OCTOBER 27, 8AM-5PM

Camp Laughing Waters, Gilbertsville

Grades: 6-12

Cost: \$45/girl

Spend the day climbing real rocks! Meet at Camp Laughing Waters, where you will travel by van to the outdoors rocks at Mocanaqua. Spend a couple hours climbing, take a lunch break, and then climb some more. Let your inner risk-taker out as you reach new heights, while GSEP belayers keep you safe. Pack your lunch and water bottle to keep you energized. This is a girl-only event. Drop off and pick up at Camp Laughing Waters.

GSEP Journey Day: aMaze! ●

SUNDAY, OCTOBER 27, 1-4PM

Resurrection Regional Grade School

2020 Shelmire Ave, Philadelphia

Grades: 6-8

Cost: Free

Mazes mean possibilities. Think about the twists and turns in your everyday life and spend the morning meeting new Cadette

friends who are finding their way, too. Learn tips and tricks to stay happy and healthy, talk about ways to navigate friendships, and practice ways to promote diversity and acceptance. This is a girl only program. *Includes the aMaze Journey award. The Take Action Project must be completed separately.

Fall Festival 2.0 ●●●

FRIDAY, NOVEMBER 1, 7PM - SUNDAY NOVEMBER 3, 10AM

Camp Mosey Wood, White Haven

Grades: K-5

Cost: \$62/girl
\$40/adult

Spend the weekend at Camp Mosey Wood celebrating fall. Experience nature with the changing leaves and beautiful sunsets over the lake! Enjoy making crafts, hiking, games, and more, while earning a badge. All troops must meet girl-adult ratios for their group. Individual girls must be accompanied by a registered adult. All adults must have a satisfactory background check on file to participate in the program. *Includes all activities, accommodations in buildings, and all meals served in the Dining Hall (Friday snack – Sunday breakfast). Includes Daisy Eco-Learner badge, Brownie Hiker badge, or Junior Camper badge.

Board Game Gals ●

SATURDAY, NOVEMBER 2, 9-11:30AM

Camp Mountain House, Allentown

Grades: K-1

Cost: \$15/girl

From Chutes and Ladders to Candy Land, board games can be so much fun! Jump into even more fun by designing your own board game at Camp Mountain House. You'll learn how to make a spinner, come up with rules, and create your own board. You'll take your new game home with you to play with all of your friends! All troops must meet girl-adult ratios for their group. Individual girls must be accompanied by a registered adult. *Includes Board Game Design Challenge badge.

Fling Flyer Fanatics ●

SATURDAY, NOVEMBER 2, 12:30-3PM

Camp Mountain House, Allentown

Grades: 2-3

Cost: \$15/girl

Airplanes: how can something so heavy float so effortlessly throughout the air? It's science! Through building your own Fling Flyer you'll find out how different forces

effect flight. You'll build, test, and improve your Fling Flyer until it glides through the air, just like the planes you see in the sky. All troops must meet girl-adult ratios for their group. Individual girls must be accompanied by a registered adult. *Includes Fling Flyer Design Challenge badge.

Treasure Hunters ●●

FRIDAY, NOVEMBER 8, 7PM - SUNDAY NOVEMBER 10, 10AM

Camp Mosey Wood, White Haven

Grades: 4-8

Cost: \$62/girl
\$40/adult

Use clues to get you through this weekend! Learn how to make trail signs, geocache to find hidden treasure, learn the basics of using a compass, and follow clues throughout camp on a treasure hunt! *Includes activities, indoor accommodations, all meals served in the Dining Hall (Friday snack–Sunday breakfast), and Geocacher badge for Juniors and Special Agent badge for Cadettes.

College Tour: Lehigh Valley ●●

SATURDAY, NOVEMBER 9, 8AM- 1PM

**Lehigh Valley Service Center
2633 Moravian Ave, Allentown**

Grades: 9-12

Cost: \$20/girl
\$10/adult

From the coolest dorm rooms to the best places to study on campus, hop aboard the college tour bus and get an inside look at some of the Lehigh Valley's top colleges and universities. You'll board a bus at our Lehigh Valley Service Center and travel to meet with current students at local schools to get the inside scoop on admissions, majors, and tuition costs. Please bring a bagged lunch. All troops must meet girl-adult ratios for their group. Individual girls must be accompanied by a registered adult. *Includes event patch, transportation from service center to each college and guided tours at each college.

Voice Your Vote ●●

SATURDAY, NOVEMBER 16, 9AM-12PM

Camp Valley Forge, Valley Forge

Grades: 9-12

Cost: \$12/girl

How can your voice make a difference? Learn all about the voting process, compare political ads, and design your own cookie campaign. Explore what voting is like for women all

around the world. All troops must meet girl-adult ratios for their group. Individual girls must be accompanied by a registered adult. *Includes Behind the Ballot badge for Seniors.

GSEP Journey Day: Get Moving ●

SATURDAY, NOVEMBER 16, 9AM-4:30PM

Camp Laughing Waters, Gilbertsville

Grades: 4-5

Cost: \$30/girl
\$15/adult

Discover, investigate, and test the energy at camp. Participate in science experiments to better understand different energy sources, and discover energy uses in everyday activities. Work with your troop to come up with an energy action plan for your troop, school, town or community, and the impact you can make on the world. This is a troop event, must come with Safety Activity check point adults. Adults will be asked to participate in facilitation of the programs. All adults must be registered girl scouts. This program will complete most of the It's Your Planet – LOVE IT! Get Moving! Journey, with assistance planning your take action project. You will need to complete your action project on your own. Program includes activities and lunch.

She and Me Camping Adventure ●●

SATURDAY, NOVEMBER 16, 10AM–SUNDAY, NOVEMBER 17, 10AM

Camp Shelly Ridge, Miquon

Grades: K-3

Cost: \$57/person

Come with your GS registered mom, grandmother, sister, aunt, etc, and discover the adventure of camp. Enjoy hiking, arts and crafts, gaga, life size Jenga, bouldering and more. End your day with a campfire, songs and s'mores. This event is designed to strengthen the bond between Girl Scouts and the women they most admire. Individual girls must be accompanied by a registered adult. Troops may participate, but this event is geared towards "the she and me" patch. Adults must have a satisfactory background check on file to participate in the program. *Includes activities, food, accommodations in a heated lodge, and a She and Me patch.



Thanks A Lot Trot Troop Fundraiser! ●●●●●

SATURDAY, NOVEMBER 23, 10AM RACE START

Camp Laughing Waters, Gilbertsville

Grades: All Ages

Cost: \$30/person

Race around camp, while earning your troop some extra money. This year's Thanks-A-Lot trot will be a fundraiser to help **G.I.R.L.s** set, reach, and achieve their goals and dreams with Girl Scouts. Girls will have the option to collect sponsorships and use the donations toward troop and other Girl Scout activities. With both 5k and 1-mile options, you can choose your difficulty level and build up your skills. After the race enjoy a campfire and smores. This is a family event, fundraising is optional. *1 Mile Fun Walk is an untimed event. Awards will be given to the top finishers of the 5k run.

GSEP Journey Weekend: Daisy Outdoor Journey ●

FRIDAY, DECEMBER 6, 7PM - SUNDAY, DECEMBER 8, 10AM

Camp Mosey Wood, White Haven

Grades: K-1

Cost: \$62/girl
\$40/adult

Come to camp and strengthen your outdoor skills. Explore the world around you and earn both of your Outdoor Journey badges! Take a hike to learn about wildlife, sing around the campfire, and have fun with Leave No Trace principles. Plan a Take Action project to complete once you return home. All troops must meet girl-adult ratios for their group. Individual girls must be accompanied by a registered adult. All adults must have a satisfactory background check on file to participate in the program. *Includes activities, Friday snack, all meals Saturday, Sunday breakfast, housing in heated cabins, and the Outdoor Art Maker and Buddy Camper badges.

GSEP Journey Weekend: Brownie Outdoor ●

FRIDAY, DECEMBER 6, 7PM-SUNDAY, DECEMBER 8, 10AM

Camp Mosey Wood, White Haven

Grades: 2-3

Cost: \$62/girl
\$40/adult

Explore the world around you as you earn all three of your Outdoor Journey badges! Have fun learning all about Leave No Trace

principles while you hike, practice your first aid skills and sing around the campfire. Plan a Take Action project to complete once you return home. All troops must meet girl-adult ratios for their group. Individual girls must be accompanied by a registered adult. All adults must have a satisfactory background check on file to participate in the program. *Includes activities, Friday snack, all meals Saturday, Sunday breakfast, housing in heated cabins, and the Hiker, First Aid, and Cabin Camper badges.

GSEP Journey Weekend: Junior Outdoor Journey ●

FRIDAY, DECEMBER 6, 7PM-SUNDAY, DECEMBER 8, 10AM

Camp Mosey Wood, White Haven

Grades: 4-5

Cost: \$62/girl
\$40/adult

Strengthen your outdoor skills while earning all three of your Outdoor Journey badges! Learn about wildlife while hiking around the lake, build an animal house, have fun practicing your Leave No Trace skills and make a snack over a campfire. Plan a Take Action project to complete once you return home. All troops must meet girl-adult ratios for their group. Individual girls must be accompanied by a registered adult. All adults must have a satisfactory background check on file to participate in the program. *Includes activities, Friday snack, all meals Saturday, Sunday breakfast, housing in heated cabins, and the Animal Habitats, Camper and Eco Camper badges.

Real Girls Code ●●

SUNDAY, DECEMBER 8, 9AM-12PM

Camp Shelly Ridge, Miquon

Grades: 2-5

Cost: \$14/girl

You + coding = a whole new world! Join thousands of other participants from hundreds of countries at a global Hour of Code event. Learn how coding changes and enhances our lives, from solving problems to connecting with people around the world. Start thinking like a coder as you play games both on and off the computer. Hear from people who use code every day to make the world a better place and be inspired to do the same! All troops must meet girl-adult ratios for their group. Individual girls must be accompanied by a registered adult. *Includes event patch and Coding Basics badge.

Real Girls Code ●

SUNDAY, DECEMBER 8, 1-4PM

Camp Shelly Ridge, Miquon

Grades: K-1

Cost: \$14/girl

You + coding = a whole new world! Join thousands of other participants from hundreds of countries at a global Hour of Code event. Learn how coding changes and enhances our lives, from solving problems to connecting with people around the world. Start thinking like a coder as you play games both on and off the computer. Hear from people who use code every day to make the world a better place and be inspired to do the same! All troops must meet girl-adult ratios for their group. Individual girls must be accompanied by a registered adult. *Includes event patch and Coding Basics badge.

She and Me Weekend Away ●

SATURDAY, DECEMBER 14, 1PM- SUNDAY, DECEMBER 15, 11AM

Camp Laughing Waters, Gilbertsville

Grades: 4-5

Cost: \$52/girl
\$30/adult

Escape to camp with the woman you love most in the world (a registered Girl Scout mom, grandmother, aunt, sister, mentor, etc.) Enjoy your time together making memorable crafts, playing games, enjoying the outdoors and more. All girls must be accompanied by an adult, no more than three girls per adult. *Includes activities on Saturday, heated cabin accommodations, and meals in the dining hall, and event patch.

Cookie Captains ●●●

SUNDAY, DECEMBER 15, 10AM-12:30PM

Camp Laughing Waters, Gilbertsville

Grades: 6-12

Cost: \$17/girl

Cookie season is almost here, and we need your #cookieboss skills! Older girls are needed to help lead activities at the Cookie Camp-In at Camp Laughing Waters on Saturday, January 4-Sunday, January 5. At this training, learn how to lead activities and teach girls how to talk to customers, remember cookie flavors, and create goals. Cadettes, Seniors, and Ambassadors interested in helping run our Cookie Camp-In must register for and attend Cookie Captains. Participants must be able to attend the Cookie Camp-In on Saturday, January 4, 5 pm-Sunday January 5, 8 am (snow day is January 11-12). *Includes snack and January event patch.

ADULTS

only register the adults necessary to meet girl-to-adult ratios for your group at the program.

Winter Camp ●●●●●●

FRIDAY, DECEMBER 27, 1:30PM-MONDAY DECEMBER 30, 6PM

Camp Mosey Wood, White Haven

Grades: 1-12

Cost: \$140/girl

Do you remember how fun summer camp was? Do you need your camp fix for the winter? Leave your parents and leaders behind and come to Mosey Wood to make new friends and meet up with your summer camp buddies! GSEP Summer Camp Staff will treat you to traditional camp activities with a winter twist! Activities include crafts, campfires, hiking, and weather permitting—ice skating and snowshoeing! While at camp all girls will work on an age-level appropriate badge. Stay in heated buildings and enjoy your meals in the Dining Hall.

Snow Splash! ●●●●

FRIDAY, JANUARY 3, 7PM- SUNDAY, JANUARY 5, 4PM

Camp Mosey Wood, White Haven

Grades: 6-12

Cost: \$115/girl

\$95/adult

How does snow splash? Well it doesn't, but you will enjoy both snow and water this weekend! Bundle up while you sled, snowshoe, ice skate, and cross-country ski! Then head to Big Boulder to snow tube. On Sunday, grab your friends and bathing suit as you journey to Kalahari's indoor water park to make a splash! You must provide your own transportation to tubing and the water park. All troops must meet girl-adult ratios for their group. Individual girls must be accompanied by a registered adult. All adults must have a satisfactory background check on file to participate in the program. *Includes activities listed (weather permitting), admission to snow tubing and the water park, accommodations in heated cabins with other troops, and hot meals served in the Dining Hall Saturday and a cold breakfast Sunday. Sunday lunch is on your own at Kalahari.

Cookie Camp-In ●●●●●

SATURDAY, JANUARY 4, 6PM - SUNDAY, JANUARY 5, 8AM

Camp Laughing Waters, Gilbertsville

Grades: K-5

Cost: \$37/girl

Cookie time is almost here! Get pumped up and ready to go with a night of cookie-themed fun! Crafts, games, and excitement await you. You'll learn #cookieboss skills

all while having a blast. Wind down for the night by watching a movie as you fall asleep inside the activity center. This is a girl-only event, that will be supervised by camp staff. No leaders or parent volunteers are able to attend. *Includes nighttime snack, light breakfast, and event patch.

Happy Campers ●

FRIDAY, JANUARY 10, 7PM - SUNDAY, JANUARY 12, 10AM

Camp Shelly Ridge, Miquon

Grades: 4-5

Cost: \$67/girl

\$45/adult

Happy Campers are we having fun 'neath the trees... Come to camp and learn all about the animals around us, take a hike, explore nature, play games, climb the indoor rock wall and more. All troops must meet girl-adult ratios for their group. Individual girls must be accompanied by a registered adult. All adults must have a satisfactory background check on file to participate in the program. *Includes accommodations in buildings, all meals, snacks and the Animal Habitats badge.

Maple Sugar Program Leaders ●●●●

SATURDAY, JANUARY 25, 10AM-4PM AND FRIDAY, FEBRUARY 21, 7PM - SATURDAY, FEBRUARY 22, 7PM

Camp Laughing Waters, Gilbertsville

Grades: 6-12

Cost: \$22/girl

Put your leadership skills into action! Help teach younger Girl Scouts all there is to know about Maple Syrup. Older girl presenters and adult volunteers are needed to create and deliver our Maple Sugaring and Maple Sapling programs. Whether you enjoy writing scripts, acting, making crafts, singing songs or helping others, there is an important role for everyone. NEW THIS YEAR: Show off your culinary skills in an optional Maple Cookoff. For the February event, create a culinary dish with Maple syrup for our participants to try and vote for their favorite. Commitment to this event includes a training on January 25th, as well as presenting the program February 20th -21st (with optional Saturday overnight). Earn Service to Girl Scouting hours as well as have lots of fun! All adults will be assigned a specific task during the program. All girls and troops must come with Safety Activity check point adults. Adults will be asked to participate in facilitation of the programs. All adults must be registered girl scouts and have satisfactory background clearances

to participate. *Includes accommodations in heated cabins in February, meals during training and event, as well as event patch.

S'more Snow ●

FRIDAY, JANUARY 31, 7PM-SUNDAY, FEBRUARY 2, 10AM

Camp Mosey Wood, White Haven

Grades: 4-5

Cost: \$82/girl

\$60/adult

Let's celebrate the fun and excitement of winter by doing all things snow related! Snowshoe through the woods, go sledding, draw a snowy landscape, snow crafts, and go snow tubing at Big Boulder. No snow? No worries! We'll make sure a memorable camp experience awaits you no matter what! Weather permitting, earn parts of the new GSUSA "snow" badges. All troops must meet girl-adult ratios for their group. Individual girls must be accompanied by a registered adult. All adults must have a satisfactory background check on file to participate in the program. *Includes activities, accommodations in heated cabins with other troops, all meals served in the Dining Hall (Friday snack - Sunday breakfast), and a three-hour snow tubing pass, and the Drawing badge.

Crane Design Challenge ●

SATURDAY, FEBRUARY 1, 9- 11:30AM

Camp Mountain House, Allentown

Grades: 4-5

Cost: \$15/girl

A rolling pin, a bottle opener, a jar with a lid, did you know that all of these things are simple machines that make our lives easier? Come to camp and explore other simple and compound machines. Then, put what you've learn to the test as you design and build your own machine: a crane! All troops must meet girl-adult ratios for their group. Individual girls must be accompanied by a registered adult. *Includes Crane Design Challenge badge.

Space Adventures ●

SATURDAY, FEBRUARY 1, 6PM-SUNDAY, FEBRUARY 2, 10AM

Camp Valley Forge, Valley Forge

Grades: 2-3

Cost: \$22/girl

\$5/adult

Girls grab your telescopes and sleeping bags - it's time to explore the sky like a space scientist! Hang out overnight at Camp Valley Forge and view the stars in our StarLab. Learn about the phases of the moon, put the solar system in your pocket, and create your own constellations. *Includes Space Science Adventurers badge, snack, and breakfast.

Winter Carnival ●●●●●

FRIDAY, FEBRUARY 7, 7PM - SUNDAY, FEBRUARY 9, 10AM

Camp Mosey Wood, White Haven

Grades: 4-12

Cost: \$80/girl

\$60/adult

Come to camp and enjoy the fun and excitement of being in the snow! Participate in winter activities at camp and go to Jack Frost for three hours of snow tubing! (Participants may upgrade to all-day tubing, skiing, or snowboarding for an additional fee, details will be in confirmation packet.) You must provide your own transportation to the ski resort. All troops must meet girl-adult ratios for their group. Individual girls must be accompanied by a registered adult. All adults must have a satisfactory background check on file to participate in the program. *Includes activities (weather permitting), accommodations in heated cabins with other troops, all meals served in the Dining Hall (Friday snack - Sunday breakfast), and your snow tubing pass.

Risk Taker Racing ●

SATURDAY, FEBRUARY 8, 10AM-4PM

Camp Laughing Waters, Gilbertsville

Grades: 2-3

Cost: \$42/girl

\$5/adult

Hit the race track at Laughing Waters to be the top racer! Girls will work to build different types of race cars: gravity cars, push cars, friction and pullback motor cars to discover what works best. Test and check your car's abilities then enter into competition against other racers to see whose is the best! Program will include educational instruction, car building kit, lunch, and awards for top finishers. Brownies

will earn their Race Car Design Challenge badge. Troops and individual girls welcome. Adults who register will be spectators but will not take part in car building and racings.

Daisy Badge Bonanza ●

SATURDAY, FEBRUARY 15, 9AM-4PM

Camp Shelly Ridge, Miquon

Grades: K-1

Cost: \$25/girl

\$5/adult

Spend your day going inside and outside as you work to earn three badges. Learn about the world around you, create art inspired by the outdoors, and challenge yourself by designing a model car. Please bring a bagged lunch, a small snack will be provided. Includes activities to complete Eco-Learner, Outdoor Art Maker, and Model Car Design Challenge badges. All troops must meet girl-adult ratios for their group. Individual girls must be accompanied by a registered adult.

Brownie Badge Bonanza ●

SATURDAY, FEBRUARY 15, 9AM-4PM

Camp Shelly Ridge, Miquon

Grades: 2-3

Cost: \$25/girl

\$5/adult

Get your badge on today! You will earn four badges throughout the day as you travel from activity to activity. Go on a hike, learn about the world around you, create awesome experiments, and search for clues throughout camp. Please bring a bagged lunch, a small snack will be provided. Includes activities to complete Hiker, Eco-Friend, Home Scientist, and tvf badges. All troops must meet girl-adult ratios for their group. Individual girls must be accompanied by a registered adult.

GSEP Journey Day: Think Like an Engineer ●●

MONDAY, FEBRUARY 15, 9AM-4PM

Check online for location!

Grades: 9-12

Cost: Free

Come out and take on the challenges of problem solving! Work through challenges with a group as you design and build your solutions - including prototypes to enrich the life of an animal, build a zip line course, and create mobility equipment. Throughout this program you will work with the support of your team as you tackle each new challenge. Girls will go home with ideas to complete the Take Action Project to finish the Think Like and Engineer

Journey. All troops must meet girl-adult ratios for their group. Individual girls must be accompanied by a registered adult. All adults must have a satisfactory background check to participate in the program. *Includes the Think Like an Engineer badge.

Maple Saplings ●●●●●

SATURDAY, FEBRUARY 22, 9-11:40AM STAGGERED START TIMES

Camp Laughing Waters, Gilbertsville

Grades: All Ages - Families Welcome

Cost: \$15/girl

\$7/adult

Bundle up and join us for a winter tradition for the whole family. Travel through history as you learn the story and discovery of maple syrup from older Girl Scouts! Play games, enjoy a snack, and even do a taste test between sap and syrup! This program runs for two hours and has staggered start times. You will be prompted to select your start time during the registration process. Coming as a troop? All troops must meet ratio. Coming as a family: Adults must supervise their children during the event; one adult must register for every three children. *Includes snack, drink, and event patch.

Maple Sugaring ●●●●●

SATURDAY, FEBRUARY 22, 9:10AM-1:55PM

STAGGERED START TIMES

Camp Laughing Waters, Gilbertsville

Grades: All Ages - Families Welcome

Cost: \$20/girl

\$8/adult

Step back in time as Older Girl Scouts lead you on a sweet three-hour tour of the history of maple syrup, for the whole family! Experience everything from the discovery of maple sugar to how maple syrup is produced today. Taste test sap and syrup to learn which one is your favorite. NEW THIS YEAR: Taste and vote for your favorite maple treat in this year's Maple Cookoff, presented by our Maple Sugar Program Leaders. This program runs three hours and has staggered start times. You will be prompted to select your start time during the registration process. Coming as a troop? All troops must meet ratio. Coming as a family: Adults must supervise their children during the event; one adult must register for every three children. *Includes snack, drink, and event patch.

Real Girls of the World ●●●

SATURDAY, FEBRUARY 23, 1-4PM

Camp Shelly Ridge, Miquon

Grades: K-5

Cost: \$22/girl

Girls of the world unite! Celebrate our WAGGGS sisterhood that spans around the world. Explore different cultures through fun activities and international snacks. Learn about global issues that affect girls everywhere and how you can take action to make change! All troops must meet girl-adult ratios for their group. Individual girls must be accompanied by a registered adult. *Includes Global Action Award, World Thinking Day Award, event patch, and snack.



PARTNER-LED PROGRAMS

Junior Balloon Car Design Challenge ●

SATURDAY, SEPTEMBER 21, 2-4PM

Bryn Mawr College

101 N. Marion Avenue, Bryn Mawr

Grades: 4-5

Cost: \$10/girl

Join Bryn Mawr College's Campus Girl Scout Club for a day of STEM fun! Learn about potential and kinetic energy, build a balloon car and test it out. You'll then make improvements to your design so you can race your balloon car with your sister Girl Scouts. All troops must meet girl-adult ratios for their group. Individual girls must be accompanied by a registered adult. *Includes a snack and the Balloon Car Design badge.

Citizen Science Stream Study ●●

SATURDAY, SEPTEMBER 28, 9AM-12PM

Stroud Water Research Center

970 Spencer Road, Avondale

Grades: 2-5

Cost: \$16/girl

Ever wonder what a wriggling stream bug can tell you about stream health? Get your boots wet for a citizen science stream study! Explore stream habitats studied year-round by real scientists, experiment in our stream-

side forests, and discover the creek critters who call them home. Then, help the experts put the STEM in STREAM by collecting and analyzing water quality data and concluding how YOU can be a super stream steward! All girls must meet girl-adult ratios for their group. Individual girls must be accompanied by a registered adult. *Includes Think Like a Citizen Scientist award and Stroud Center Education Programs fun patch. Take Action Project to be completed on your own.

Junior Water Explorers ●

FRIDAY, OCTOBER 4, 6-7:30PM

The Nature Place

575 Saint Bernardine Street, Reading

Grades: 4-5

Cost: \$18/girl

\$4/adult

Juniors come splash around! Hop in the creek and learn how to be a water quality citizen scientist. Learn about water studies and explore how citizens help advance decisions on water in Berks County. Please wear water shoes or waterproof boots. All troops must meet girl-adult ratios for their group. Individual girls must be accompanied by a registered adult. *Includes Citizen Science badge.

Blue Mountain Adventurers

SATURDAY, OCTOBER 5, 9AM-5PM

Blue Mountain Resort

1660 Blue Mountain Drive, Palmerton

Grades: 9-12

Cost: \$41/girl

\$38/adult

Get your rush of adrenaline! Take on a variety of challenges including rock climbing, Gaga ball, human foosball, paddle boarding, hiking and so much more! You'll leave with new skills and great memories! All troops must meet girl-adult ratios for their group. Individual girls must be accompanied by a registered adult. *Includes a boxed lunch. Completes steps 4 & 5 of Ambassador Ultimate Rec. Challenge badge and steps 2-4 of Senior Paddling badge.

Staying Fit with the KD's ●

SATURDAY, OCTOBER 5, 11AM-1PM

Villanova University

800 E. Lancaster Avenue, Villanova

Grades: 4-5

Cost: \$10/girl

The Villanova Kappa Deltas all have different ways of staying fit - whether they are hitting the gym, going for walks, or playing on sports team! Join the KDs to learn new

ways of staying active, eating healthy, and lowering stress. Take what you learned home and start developing healthy habits for a lifetime! All troops must meet girl-adult ratios for their group. Individual girls must be accompanied by a registered adult. *Includes Staying Fit badge.

Local Locavores ●

SATURDAY, OCTOBER 5, 10AM-12PM

Nurture Nature Center

518 Northampton Street, Easton

Grades: 9-10

Cost: \$22/girl

Eating local has many benefits for both individuals and the community. Join "Buy Fresh Buy Local" of the Greater Lehigh Valley in learning about eating locally grown seasonal foods, local food sources, and how to cook a meal using local ingredients. An optional tour to the Easton Farmer's Market will be held after the workshop from 12-1pm. All troops must meet girl-adult ratios for their group. Individual girls must be accompanied by a registered adult. *Includes Locavore badge.

Junior Jeweler ●

SATURDAY, OCTOBER 5, 9AM-12PM

Reading Public Museum

500 Museum Road, Reading

Grades: 4-5

Cost: \$25/girl

\$6/adult

Explore amazing jewelry from other cultures and Hollywood in our temporary exhibit "CUT! Costume and the Cinema." Then, create inspired pieces and learn some tricks of the trade! All troops must meet girl-adult ratios for their group. Individual girls must be accompanied by a registered adult. *Includes Jeweler badge.

Asian Outdoor Art ●

SATURDAY, OCTOBER 5, 1-4PM

Reading Public Museum

500 Museum Road, Reading

Grades: 6-8

Cost: \$25/girl

\$6/adult

Explore Asian outdoor art with Reading Public Museum! After touring their temporary exhibit, Floating Beauty: Japanese Woodblock Prints, create your own beautiful masterpieces in a variety of mediums. All troops must meet girl-adult ratios for their group. Individual girls must be accompanied by a registered adult. *Includes Outdoor Art Apprentice badge.

Spook-opoly ●●●

SATURDAY, OCTOBER 5, 1-4PM

Lehigh University

27 Memorial Drive, Bethlehem

Grades: K-5

Cost: \$7/girl

Join the sisters of Lehigh University's Kappa Deltas to learn about strategy and game making techniques that can be used in everyday life! Go through a series of stations playing games and discussing different strategies to come out on top! This Halloween themed day will include crafts, as well as physical and mental games! All troops must meet girl-adult ratios for their group. Individual girls must be accompanied by a registered adult. *Includes Making Games badge for Brownies.

Race Car Engineers ●

SATURDAY, OCTOBER 5, 10-11:30AM

Snapology @ West Lawn - Wyomissing Hills Library

101 Woodside Avenue, West Lawn

Grades: 2-3

Cost: \$25/girl

Get ready, get set, go! Learn how to build a LEGO® brick car and get ready to race! Explore and experiment with the physics of motion, momentum, friction and more as you work in teams to design and test your race cars. All troops must meet girl-adult ratios for their group. Individual girls must be accompanied by a registered adult. *Includes Mechanical Engineering: Race Car Design Challenge badge.

Hit the Trail ●●

SATURDAY, OCTOBER 5, 10AM-12PM

**Riverbend Environmental Education Center
1950 Spring Mill Road, Gladwyne**

Grades: K-3

Cost: \$16/girl

Ready, set, hike! Learn how to protect nature as you explore outside and hike Riverbend's trails. All troops must meet girl-adult ratios for their group. Individual girls must be accompanied by a registered adult. *Includes Eco-Learner badge for Daisies and Eco Friend badge for Brownies.

Brownie Eco-Friends ●

SUNDAY, OCTOBER 6, 3:30-5PM

The Nature Place

575 Saint Bernardine Street, Reading

Grades: 2-3

Cost: \$18/girl

\$4/adult

Unite with your sister Girl Scouts and become an eco-friend! Explore the park and learn about ways to keep plants and trees happy, look for animal homes and learn how to keep them safe and relax around a glowing campfire. All troops must meet girl-adult ratios for their group. Individual girls must be accompanied by a registered adult. *Includes Eco Friend badge.

Brownie Cybersecurity Basics ●

THURSDAY, OCTOBER 10, 6-8PM

Alvernia University

500 Saint Bernardine Street, Reading

Grades: 2-3

Cost: \$10/girl

Learn about the basics of cybersecurity and how to stay safe on the internet! Find out about all the ways that the internet and technology affect your daily life. Finish the day by discussing safe messaging practices when online. All troops must meet girl-adult ratios for their troop. Individual girls must be accompanied by an adult. *Includes Brownie: Cybersecurity Basics badge.

Friendship Fun ●

SATURDAY, OCTOBER 12, 10AM-12PM

Salem United Church of Christ

186 E. Court Street, Doylestown

Grades: 2-3

Cost: \$16/girl

Join Girls Empowered to meet new friends and learn the best ways to communicate and handle disagreements. Engage in fun,

QUESTIONS ABOUT
A PROGRAM?

contact us! 215.564.2030 or
memberservices@gsep.org

hands-on activities with other girls designed to teach you lessons about building strong friendships. All troops must meet girl-adult ratios for their group. Individual girls must be accompanied by a registered adult. *Includes a snack and Making Friends badge.

Empowering Girls ●●

SATURDAY, OCTOBER 12, 1-4PM
Salem United Church of Christ
186 E. Court Street, Doylestown

Grades: 4-8

Cost: \$18/girl

Are you a social butterfly? Join the staff of Girls Empowered and your sister Girl Scouts and learn how to develop meaningful, healthy relationships. Engage in fun, hands-on activities designed to help you practice effective communication skills, whether you're online or in person. Learn proper etiquette for special occasions and show off all your new skills at a fun dance party! All troops must meet girl-adult ratios for their group. Individual girls must be accompanied by a registered adult. *Includes a snack and Social Butterfly badge for Juniors and Netiquette badge for Cadettes.

Fly, Fly Away! ●●●

SATURDAY, OCTOBER 12, 9:45AM-12:30PM
Pottstown Airport
50 Airport Road, Pottstown

Grades: 6-12

Cost: \$10/girl

Immerse yourself in aviation at the Pottstown Airport with the Experimental Aircraft Association! Learn about how planes fly and how they are built. You'll even get to view a flight demonstration! Pilots will discuss their education, the skills you need and community service opportunities. All troops must meet girl-adult ratios for their group. Individual girls must be accompanied by a registered adult. *Includes aviation fun patch, pizza lunch and Sky badge for Seniors.

Behind the Mask ●●●●

SATURDAY, OCTOBER 12, 5-10PM
Dorney Park
3830 Dorney Park Road, Allentown

Grades: 4-12

Cost: \$32/person

Every fall, Dorney Park transforms into a haunted nightmare. Go behind the scenes and see how the Haunt Make-Up Team prepares its actors for an evening of scaring and entertaining guests. Take a tour of one of the spooky attractions, then enjoy the thrills of the night...if you dare! All troops must meet girl-adult ratios for their group.

Individual girls must be accompanied by a registered adult. *Includes workshop and park admission from 12-10PM. Completes step 4 of Junior Entertainment Technology badge.

911, What's Your Emergency? ●

SUNDAY, OCTOBER 13, 10AM-12PM

Einstein Medical Center Montgomery
559 W. Germantown Pike, East Norriton

Grades: 2-3

Cost: \$13/girl

Do you know what to do for a cut or a bee sting? How can you help if someone breaks her arm when she falls? Do you know what goes into a first aid kit? Everyone should be prepared and learn how to help in an emergency! At the end of this program, girls will make a first aid kit to take home, talk to nurses and other hospital staff, and meet the brave and inspiring people who are the first ones to arrive at an emergency. All troops must meet girl-adult ratios for their group. Individual girls must be accompanied by a registered adult. *Includes Brownie First Aid badge.

911, What's Your Emergency? ●

SUNDAY, OCTOBER 13, 1-3PM

Einstein Medical Center Montgomery
559 W. Germantown Pike, East Norriton

Grades: 4-5

Cost: \$13/girl

Do you know what to do for a cut or a bee sting? How can you help if someone breaks her arm when she falls? Do you know what goes into a first aid kit? Everyone should be prepared and learn how to help in an emergency! Make a first aid kit to take home, talk to nurses and other hospital staff, and meet the brave and inspiring people who are the first responders during an emergency. All troops must meet girl-adult ratios for their group. Individual girls must be accompanied by a registered adult. *Includes Junior First Aid badge.

Water Safety 101 ●●●●

SUNDAY, OCTOBER 13, 9-11AM

Kalahari Water Resort

250 Kalahari Boulevard, Pocono Manor

Grades: 6-12

Cost: \$43/girl

\$40/adult

Team up with the staff at Kalahari Resort and dive into water safety! Learn the basics of lifeguarding and how to identify distressed

swimmers and medical emergencies. Practice basic rescue techniques and learn how to recognize drowning victims. Take a tour behind the slides followed by fun at the waterpark! All troops must meet girl-adult ratios for their group. Individual girls must be accompanied by a registered adult. A waiver must be signed before arrival. *Includes a Kalahari patch and all-day admission to the waterpark.

Credit Crusaders ●

TUESDAY, OCTOBER 15, 6-8PM

Meridian Bank

9 Old Lincoln Highway, Malvern

Grades: 11-12

Cost: \$10/girl

Credit scores, spending limits, and annual percentage rates—oh my! Join the PA Bankers and get the scoop on how to understand credit lingo and start building your own credit. Explore credit card offers, write a credit commitment and take a bank tour! All troops must meet girl-adult ratios for their group. Individual girls must be accompanied by a registered adult. *Includes Good Credit badge.

Night Hikers ●●●

FRIDAY, OCTOBER 18, 6-7:30PM

Tyler Arboretum

515 Painter Road, Media

Grades: 2-8

Cost: \$22/person

Experience nature in a new way—in the dark! During your night hike, join an educator from Tyler Arboretum to explore the outdoors using your senses. Find exciting discoveries that can only be revealed in darkness and bond with your sister Girl Scouts as you embark on this nighttime adventure! The hike will end around a roaring campfire where you can enjoy s'mores and reflect on your experience. All troops must meet girl-adult ratios for their group. Individual girls must be accompanied by a registered adult. *Completes steps 1 and 2 of Outdoor Adventurer badge and steps 1 and 2 of Night Owl badge.

Flower Power ●

SATURDAY, OCTOBER 19, 10AM-12PM

Nurture Nature Center

518 Northampton Street, Easton

Grades: 4-5

Cost: \$22/girl

Flowers are not just beautiful to look at—they are also important in supporting our ecosystem! Learn about their diversity

and family relationships, their roles in keeping insect populations healthy, the science behind their scents, and more as you explore the many aspects of flowering plants. All troops must meet girl-adult ratios for their group. Individual girls must be accompanied by a registered adult. *Includes Flowers badge.

Science of Style ●

SATURDAY, OCTOBER 19, 9AM-12PM

Reading Public Museum

500 Museum Road, Reading

Grades: 9-10

Cost: \$25/girl
\$6/adult

Explore the cutting-edge science of cosmetics and costumery! Explore the museum's temporary exhibit, CUT! Costume and the Cinema, then learn what goes into beauty products, explore fabric, and design the future of fashion! All troops must meet girl-adult ratios for their group. Individual girls must be accompanied by a registered adult. *Includes Science of Style badge.

Pumpkin Painting Palooza ●●●

SATURDAY, OCTOBER 19, 6:30PM - SUNDAY, OCTOBER 20, 9AM

Crayola Experience

30 Centre Square, Easton

Grades: K-5

Cost: \$57/girl
\$50/adult

Sleepover at Crayola Experience for some spooky, colorFALL fun! Create your very own drip-paint pumpkin during this ghostly overnight. Enjoy 25 hands-on attractions, Halloween themed crafts, and an indoor trick-or-treat! All troops must meet girl-adult ratios for their group. Individual girls must be accompanied by a registered adult. *Includes dinner, breakfast, and an exclusive Crayola fun patch!

Fit Fun ●

SATURDAY, OCTOBER 19, 10:45AM-12PM

Capital Blue Store

2845 Center Valley Parkway, Center Valley

Grades: 2-3

Cost: \$10/girl

Do you like games and recess? Join Capital Blue Cross and discover why rules are needed for games and sports! Play in groups and learn how to be a good sport,

while encouraging your teammates to try their best. Will your team score the most points? Come out and see! Girls should wear fitness attire. All troops must meet girl-adult ratios for their group. Individual girls must be accompanied by a registered adult. *Includes Fair Play badge.

OG Photographers ●

SATURDAY, OCTOBER 19, 9AM-12PM

Chester County Art Association

100 N. Bradford Avenue, West Chester

Grades: 11-12

Cost: \$33/girl

Learn about the history of photography and create your own pin-hole camera. Explore the science of photography, including perspective, light, exposure, photo-sensitive materials, and the chemical development process. Then, delve deeper into the fine art aspects of composition, like shadows/highlights, contrast, choosing subjects, and arranging elements. 35 mm camera required. All troops must meet girl-adult ratios for their group. Individual girls must be accompanied by a registered adult. *Includes Photographer badge.

Business Etiquette ●

SATURDAY, OCTOBER 19, 1-3PM

The Victory Bank

548 N. Lewis Road, Limerick

Grades: 9-10

Cost: \$10/girl

From the attire you wear to how you hold your shoulders when asking for a raise, learn how to communicate with confidence, write a stand-out cover letter, and ace an interview. Network with professional female bankers and get a tour of a bank! All troops must meet girl-adult ratios for their group. Individual girls must be accompanied by a registered adult. *Includes Business Etiquette badge.

Terrific Trees ●

SATURDAY, OCTOBER 19, 10AM- 12PM

Bowman's Hill Wildflower Preserve

1635 River Road, New Hope

Grades: 6-8

Cost: \$15/girl
\$5/adult

Are you ready to learn trees from A to Z? Join a naturalist and discover prized specimens on a tour of the preserve's grounds. Learn how to identify Pennsylvania trees and find out about their history and uses. The fun wouldn't

be complete without taking home your own unique tree art. All troops must meet girl-adult ratios for their group. Individual girls must be accompanied by a registered adult. *Completes steps 2, 3, and 5 of Trees badge.

Rad Robotics ●

SUNDAY, OCTOBER 20, 11AM-5PM

Temple University

1801 N. Broad Street, Philadelphia

Grades: 4-5

Cost: \$19/girl

Join Temple's Theta Tau members to design, build, and program a robot! Explore the world of robotics, the theory behind it, and what makes robots tick. Through hands on experiences you'll discover the practical and fun applications of how robots can be used in everyday life. *Includes lunch, snacks, and Programming Robots badge.

AAA Girl Scouts Auto Learn ●●

SUNDAY, OCTOBER 20, 4-6PM

AAA Car Care Center

105 Quarry Road, Downingtown

Grades: 9-12

Cost: \$10/girl

Get under the hood with AAA experts as you practice how to measure tire pressure, check fluids and measure tire tread. Learn what to put into a vehicle's emergency kit, get insurance tips, compare car efficiencies and learn safe driving habits. All participants must wear closed-toe shoes and refrain from wearing jewelry. All troops must meet girl-adult ratios for their group. Individual girls must be accompanied by a registered adult. *Includes Car Care badge for Seniors.

Hikers After Dark ●

SUNDAY, OCTOBER 20, 5-7PM

Wissahickon Environmental Center

300 W. Northwestern Avenue, Philadelphia

Grades: 2-3

Cost: \$13/girl

Join us for an evening hike in the Andorra meadow! Learn about being prepared for a day hike, including trail etiquette and preparation for your hike. Please wear appropriate footwear. All troops must meet girl-adult ratios for their group. Individual girls must be accompanied by a registered adult. *Includes trail snack and Hiker badge.

Cirque Mechanics ●●●●●●●●

SUNDAY, OCTOBER 20, 3-5PM

Miller Center for the Arts

4 N. 2nd Street, Reading

Grades: K-12

Cost: \$19/girl

Step right up and experience the latest invention from the creative minds of Cirque Mechanics, who finds its root in the mechanical and its heart in the stories of American industrial ingenuity. Experience a modern interpretation of the 42FT historic one-ring circus that showcases a galloping mechanical metal horse and rotating tent frame for strongmen, acrobats, and aerialists. All troops must meet girl-adult ratios for their troop. Individual girls must be accompanied by an adult.

Geocache Explorers ●

SATURDAY, OCTOBER 26, 11AM-1PM

Villanova University

800 E. Lancaster Avenue, Villanova

Grades: 4-5

Cost: \$10/girl

Join the members of Villanova Kappa Deltas on a campus wide hunt for different geocaches! First, learn how to use longitude and latitude to navigate to the geocache location. Then, create an individual trade item to place in the treasure box, replacing the one you take. Throughout the hunt, you will explore safety and how to manage different terrains. All troops must meet girl-adult ratios for their group. Individual girls must be accompanied by a registered adult. *Includes Geocacher badge.

Colonial Days ●

SATURDAY, OCTOBER 26, 10AM-1PM

Washington Crossing Park

1112 River Road, Washington Crossing

Grades: 4-5

Cost: \$17/girl
\$11/adult

Take a fun-filled trip back in time! Experience life during the colonial era as you interact with costumed interpreters and period activities. Try colonial cooking, candle dipping, quill pen writing, colonial toys and games, and so much more! Please bring a bagged lunch. All troops must meet girl-adult ratios for their group. Individual girls must be accompanied by a registered adult. *Includes Playing the Past badge.

Halloween Harvest Yoga Adventure ●

SATURDAY, OCTOBER 26, 1-3PM

Camp Vally Forge, Valley Forge

Grades: K-3

Cost: \$22/girl

Come celebrate the magic of Halloween with yoga! Use your imagination to guide you through a yoga adventure full of fall time harvest essentials. In addition to learning fun yoga poses, take part in imagery exercises, games, time for relaxation, and a fun craft! Please bring a yoga mat if you have one. Costumes are encouraged but optional! All troops must meet girl-adult ratios for their group. Individual girls must be accompanied by a registered adult. *Includes My Best Self badge.

Staying Fit ●

SATURDAY, OCTOBER 26, 2-4PM

Moondog Yoga

115 E. Broad Street, Suite 200

Quakertown

Grades: 4-5

Cost: \$25/girl

Jump into this program to figure out what fitness, food, and fun you need to stay strong for life. Get active with aerobic activity, learn how yoga can help relieve stress, and brainstorm ways to keep your body fueled. All troops must meet girl-adult ratios for their group. Individual girls must be accompanied by a registered adult. *Includes Staying Fit badge and Moondog Yoga event patch.

Science of Happiness ●

SATURDAY, OCTOBER 26, 5-7PM

Moondog Yoga

115 E. Broad Street, Suite 200

Quakertown

Grades: 6-8

Cost: \$25/girl

It's time to be happy! Learn to use breathing, yoga, and other de-stressing tools to find inner peace and calm. Create an action plan to stay healthy and happy all year long! All troops must meet girl-adult ratios for their group. Individual girls must be accompanied by a registered adult. *Includes Science of Happiness badge and Moondog Yoga event patch.

What's the Big Idea? ●

SATURDAY, OCTOBER 26, 11AM-1PM

National Museum of Industrial History

602 E. 2nd Street, Bethlehem

Grades: 2-3

Cost: \$22/girl

Do you have big ideas? Put on your inventor hat and join us at the National Museum of Industrial History. Discover how the inventing process happens as you look at real world problems, experiment with solutions, and get creative designing and building improvements to everyday life. All troops must meet girl-adult ratios for their group. Individual girls must be accompanied by a registered adult. *Includes Inventor badge.

Club Philly Forensics ●●●●

SATURDAY, OCTOBER 26 10AM-12PM

Grace Epiphany Church

224 E. Gowen Avenue, Philadelphia

Grades: 6-12

Cost: \$42/girl

Were you ever curious to know what forensic scientists do? Practice your observation and critical thinking skills with Club Philly Forensics. Do some fingerprinting and analyze some unfamiliar substances with forensic professionals! All troops must meet girl-adult ratios for their troop. Individual girls must be accompanied by an adult.

Healthy Me = Healthy Community ●

SATURDAY, NOVEMBER 2, 3:30-5PM

Please Touch Museum

**4231 Avenue of the Republic,
Philadelphia**

Grades: 2-3

Cost: \$29/girl
\$20/adult

What does it mean to be a good neighbor? Explore the people and places that make up a community and learn how keeping our bodies healthy helps us to be active members of our communities. All troops must meet girl-adult ratios for their group. Individual girls must be accompanied by a registered adult. *Includes Good Neighbor badge.

Digi Girlz Women in Coding ●●

SATURDAY, NOVEMBER 2, 12-2PM
Microsoft Store
160 N. Gulph Road, King of Prussia

Grades: 6-10

Cost: free

Meet local woman who work in computer science and find out what a successful career in technology is. Get a hands-on introduction to coding and create your own project. Don't miss this opportunity to meet role models, get inspired by the pros, and get a hands-on introduction to the world of coding! All troops must meet girl-adult ratios for their group. Individual girls must be accompanied by a registered adult. *Includes Microsoft fun patch.

Empowerment Hike ●●●

SATURDAY, NOVEMBER 2, 11AM-1:30PM
Ridley Creek State Park, Media

Grades: 9-12

Cost: \$41/girl

Put yourself first and take care of your mental health! Hiking is a great way to connect with nature and overcome physical challenges, while women's circles help us grow together by creating safe spaces of unconditional love. You'll learn about trail systems, create community by participating in women's circle activities, and practice some yoga. By the end of this program, you'll feel strong and empowered! All troops must meet girl-adult ratios for their group. Individual girls must be accompanied by a registered adult. *Completes step 3 of Senior Women's Health badge and steps 1 and 5 of Ambassador Ultimate Recreation Challenge badge.

Land of the Lenape ●●●

SATURDAY, NOVEMBER 2, 10-11:30AM
Tyler Arboretum
515 Painter Road, Media

Grades: K-5

Cost: \$14/girl

Experience the life of Lenape families who lived in our region 1,000 years ago! Visit a traditional wigwam replica and learn about the many ways in which the Lenape people used native plants and animals throughout their daily lives. All troops must meet girl-adult ratios for their group. Individual girls must be accompanied by a registered adult. *Completes steps 3 and 4 of Playing the Past badge for Juniors.

Nature is Neat! ●

SUNDAY, NOVEMBER 3, 10-11:30AM
Bowman's Hill Wildflower Preserve
1635 River Road, New Hope

Grades: K-1

Cost: \$10/girl
\$5/adult

Explore a rotten log and discover the roles played by the unsung heroes of nature—the decomposers! Learn how nature uses resources wisely and how you can be a super recycler. Plus, make a recycled art project. All troops must meet girl-adult ratios for their group. Individual girls must be accompanied by a registered adult.

*Completes requirements for the Clover Petal.

Trekkin' in Nature ●

SUNDAY, NOVEMBER 3, 1-3PM
Bowman's Hill Wildflower Preserve
1635 River Road, New Hope

Grades: 2-3

Cost: \$14/girl
\$5/adult

Hike through the beautiful Bowman's Hill Wildflower Preserve and discover unique rock formations and trees that were alive over 200 years ago! Learn how to read a trail map and trail signs as you complete a one-of-a-kind Girl Scout scavenger hunt. All troops must meet girl-adult ratios for their group. Individual girls must be accompanied by a registered adult. *Includes Hiker badge.

Climb On! ●●●

SUNDAY, NOVEMBER 3, 1:30-4:30PM
Philly Rock Gym - East Falls
3500 Scotts Lane, Philadelphia

Grades: 6-12

Cost: \$30/girl

Feed your hunger for adventure as you strap on your harness and climb on! Learn how to tie safety knots, apply a harness, and belay alongside Philly Rock Gym staff. Then, put your skills to the test as you scale the gym walls! Helmets will be provided for all girls and must be worn while climbing. All troops must meet girl-adult ratios for their group. Individuals girls must be accompanied by a registered adult. *Includes Philly Rock Gym patch.

Programmer Prodigies ●

SATURDAY, NOVEMBER 9, 12-5PM
Temple University
1801 N. Broad Street, Philadelphia

Grades: 6-8

Cost: \$13/girl

Partner up with Temple's Theta Tau members and explore computer programming! You'll investigate the world of data processing, what goes in, and exactly how it is outputted. Create simple algorithms and learn how to process data. Put your newly learned skills to the test as you compete in a programming competition with your sister Girl Scouts! *Includes lunch, snacks, and the Think Like a Programmer Journey award. Take Action Project must be completed separately.

Photo Explorers ●

SATURDAY, NOVEMBER 9, 9AM-12PM
Chester County Art Association
100 N. Bradford Avenue, West Chester

Grades: 4-5

Cost: \$33/girl

Explore digital photography from an expert in the craft! Learn about composition, perspective, light, subjects, and the act of arranging and putting together the elements of a photograph. Pair up with a partner and get the opportunity to explore and take pictures. Then, using the editing tools in Google Photos, you'll learn how to manipulate and use the Exposure, Contrast, Shadows/Highlights, Color Balance and Color Saturation options to enhance your photo. Android or iPhone required. All troops must meet girl-adult ratios for their group. Individual girls must be accompanied by a registered adult. *Includes Digital Photographer badge.

Savvy Shopper ●

SATURDAY, NOVEMBER 9, 9AM-12PM
Penn Community Bank
219 S. 9th Street, Perkasie

Grades: 4-5

Cost: \$10/girl

Explore your needs and wants, and why you want what you want! Look into why these material items make you happy...or not! Learn how to decide what to buy and be able to smartly save money for both your needs and wants. All troops must meet girl-adult ratios for their troop. Individual girls must be accompanied by an adult. *Includes Savvy Shopper badge and tour of the bank.

Comparison Shopping ●

SATURDAY, NOVEMBER 9, 9AM-12PM

Penn Community Bank
219 S. 9th Street, Perkasio

Grades: 6-8

Cost: \$10/girl

You can buy just about anything online – learn how to pay a fair price and don't fall victim to a fraud! Become savvy comparison shoppers by learning how to leverage online reviews and checking the fine print. Walk away with the skills needed to manage your online shopping! All troops must meet girl-adult ratios for their troop. Individual girls must be accompanied by an adult. *Includes Comparison Shopping badge and bank tour.

Fitness for the Body & Mind ●

SATURDAY, NOVEMBER 9, 9-10AM

Athleta King of Prussia

Grades: 4-5

Cost: \$7/girl

Help your family stay fit with Athleta! Learn how to keep your body fueled, how to stress less, and get the truth about health. All troops must meet girl-adult ratios for their group. Individual girls must be accompanied by a registered adult. *Includes Staying Fit badge.

911 What's Your Emergency? ●

SATURDAY, NOVEMBER 9, 9AM-12:15PM

Paoli Hospital
255 W. Lancaster Avenue, Paoli

Grades: 4-5

Cost: \$13/girl

Do you know what to do in the event of a medical emergency? Do you want to learn how to take care of the common types of injuries? Join us as we take you on the journey of First Aid. Create your own first aid kit, talk to members of our hospital medical team, meet Emergency Medical Service First Responders and practice your new skills. All troops must meet girl-adult ratios for their group. Individual girls must be accompanied by a registered adult. *Includes First Aid badge.

Healthy Meals ●

SATURDAY, NOVEMBER 9, 10:30AM-12PM

Capital Blue Store
2845 Center Valley Parkway, Center Valley

Grades: 4-5

Cost: \$10/girl

Get healthy with Capital Blue Cross! Learn how to make a healthy lunch and delicious

dessert for yourself. Leave with the skills to make any meal of the day. Please wear fitness attire. All troops must meet girl-adult ratios for their group. Individual girls must be accompanied by a registered adult. *Includes Simple Meals badge.

Comics & Cartooning ●

SATURDAY, NOVEMBER 9, 1-4PM

Chester County Art Association
100 N. Bradford Avenue, West Chester

Grades: 6-8

Cost: \$27/girl

Delve into the world of comics and choose a story to tell in an illustrative fashion! Bring your ideas to life as you develop an original story into a 1 to 2-page comic that you can take home. If time allows, get the opportunity to combine comic stories into an original anthology, unique to your troop. All troops must meet girl-adult ratios for their group. Individual girls must be accompanied by a registered adult. *Includes Comic Book Artist badge.

Celebrate Sisterhood ●●

SUNDAY, NOVEMBER 10, 10:30AM-4:30PM

Girls Empowered
Hatfield Township Admin Building
1950 School Road, Hatfield

Grades: 9-12

Cost: \$34/girl

Join the staff of Girls Empowered and explore what sisterhood means and why it is important. Learn how to develop healthy relationships with other girls, use effective communication skills, and empower yourself and others. You'll identify a sisterhood issue and work to develop a plan to take action! Girls must attend BOTH sessions in order to receive the award. All troops must meet girl-adult ratios for their group. Individual girls must be accompanied by a registered adult. *Includes snack and Mission: Sisterhood journey award.

Daisy Flower Garden ●

SUNDAY, NOVEMBER 10, 3-5:30PM

The Hardwork Studio
35 N. Narberth Avenue, Narberth

Grades: K-1

Cost: \$15/girl

Grow a Daisy flower garden with fabric! Create a daisy with two leaves and 10 petals, one for each flower friend. Needle felt your petals onto a patch, then work

with an instructor to sew it onto your very own tote bag using a sewing machine. All troops must meet girl-adult ratios for their group. Individual girls must be accompanied by a registered adult. *Includes Handwork Studio patch and completes Watering Can Award from Welcome to the Daisy Flower Garden Journey.

Daisy Car Design Challenge ●

THURSDAY, NOVEMBER 14, 6-8PM

Alvernia University
500 Saint Bernardine Street, Reading

Grades: K-1

Cost: \$10/girl

Join Alvernia and test your engineering skills by designing your very own car! Learn how engineers brainstorm to solve their problems. You will learn how friction and gravity affect the motion of cars and their speed. Finally, learn how to develop fair tests and finish the day testing your own design! All troops must meet girl-adult ratios for their group. Individual girls must be accompanied by an adult. *Includes Daisy: Mechanical Engineer Car Design Challenge badge.

Super Sensory Night Hike ●●

FRIDAY, NOVEMBER 15, 7-8:30PM

Perkiomen Watershed Conservancy
1 Skippack Pike, Schwenksville

Grades: 2-5

Cost: \$15/girl
\$7/adult

Nighttime holds some unique surprises for all of us! Use your senses to move through the night with a Conservancy Hike Guide. Begin by learning about some of the special adaptations of local nocturnal animals. Then, venture out on a night hike where you'll use your senses to explore the Conservancy grounds and discover more about your own night adaptations. All troops must meet girl-adult ratios for their group. Individual girls must be accompanied by a registered adult. *Completes steps 1-3 of Brownie Outdoor Adventurer badge and step 2 of Junior Animal Habitats badge.

Brownie Adventures ●

SATURDAY, NOVEMBER 16, 7-8:30PM

**Bowman's Hill Wildflower Preserve
1635 River Road, New Hope**

Grades: 2-3

Cost: \$13/girl
\$5/adult

Come experience nature in a new way! Use your senses to explore nature at night, play a game and gaze at the stars, then roast a marshmallow around the campfire. All troops must meet girl-adult ratios for their group. Individual girls must be accompanied by a registered adult. *Completes steps 1-4 of Brownie Outdoor Adventurer badge.

Amazing Astronomers ●●

SATURDAY, NOVEMBER 16, 5:30-7:30PM

**American Helicopter Museum
1220 American Blvd, West Chester**

Grades: 2-5

Cost: \$32/girl
\$20/adult

Blast off on a fun-filled evening of stargazing! Discover the basics of astronomy, including the sun, moon and stars. Meet a professional astronomer and get answers to all of your questions. You'll learn how to use a telescope and then use a professional telescope to gaze at the night sky (weather permitting). All troops must meet girl-adult ratios for their group. Individual girls must be accompanied by a registered adult. *Includes the Space Science Adventurer badge for Brownies and Space Science Investigator badge for Juniors.

History in the Making ●

SATURDAY, NOVEMBER 16, 11AM-1PM

**National Museum of Industrial History
602 E. 2nd Street, Bethlehem**

Grades: 4-5

Cost: \$7/girl

Get ready to be transported back in time to 1876! Join the staff at the National Museum of Industrial History and learn about how women lived in the nineteenth century. Become an exhibitor in the Women's Pavilion at the World's Fair, learn about the first woman engineer, or join Susan B Anthony as a women's right activist. This was an exciting time for women to show the nation—and the world—their creative talents, industrial capabilities, and overall ingenuity! You'll use artifacts in the museum's Centennial Gallery as your inspiration to learn and recreate real and fictional characters from the time period. Get ready to dress up, work an antique printing press, handle silk worm cocoons, and petition for your

right to vote! All troops must meet girl-adult ratios for their group. Individual girls must be accompanied by a registered adult. *Includes Playing the Past badge.

Eco Learner ●

SATURDAY, NOVEMBER 16, 9AM-12PM

**Poolside Wildlife Sanctuary
3701 Orchid Place, Emmaus**

Grades: K-1

Cost: \$23/girl
\$7/adult

Learn how to minimize your personal impact on the environment and go a step further as you help monarch butterflies that have been affected by other humans. Get to create a milkweed seed bomb that can be deposited in a spot of your choice. Whether planted or lobbed to add greenery in a vacant spot, you will help to fix what others have hurt. All troops must meet girl-adult ratios for their group. Individual girls must be accompanied by a registered adult. *Includes Wildlands Conservancy Jr. Naturalist patch and Eco Learner badge and completes requirements for Clover award.

Agents of Change ●

SATURDAY, NOVEMBER 16, 10:30AM-3:30PM

**Kind Living Designs
Exeter Community Library
4565 Prestwick Drive, Reading**

Grades: 4-5

Cost: \$39/girl

Discover your individual skills and talents, unleash the passions you have to create change, and get ready to be a leader. Together with Kind Living Designs, you will create your own leadership mission statement, learn how you can make a difference as a team and harness the amazing power YOU have to advocate for change in your community. All troops must meet girl-adult ratios for their group. Individual girls must be accompanied by a registered adult. *Includes Agent of Change Journey Award.

Courageous Climbers ●●●

SATURDAY, NOVEMBER 16, 9AM-12PM

**Doylestown Rock Gym
3853 Old Easton Road, Doylestown**

Grades: 6-12

Cost: \$24/girl

Feed your hunger for adventure as you strap on your harness and climb on! Learn about bouldering safety, harnessing and knot tying. Then, put your skills to the test as your scale the gym walls. All troops must meet girl-

adult ratios for their group. Individual girls must be accompanied by a registered adult. *Includes Doylestown Rock Gym event patch.

Paddle Boat Racers ●

SATURDAY, NOVEMBER 16, 10AM-12PM

**Engineering for Kids @
Murphy Recreation Center
300 W. Shunk Street, Philadelphia**

Grades: 4-5

Cost: \$29/girl

Put your engineering skills to the test! Observe, evaluate, and apply the ideas of drag, thrust, kinetic, and potential energy. Then, construct a paddleboat from household materials and see how fast it can go! All troops must meet girl-adult ratios for their group. Individual girls must be accompanied by a registered adult. *Includes Paddle Boat Design Challenge badge.

Cross Trainers ●●

SUNDAY, NOVEMBER 17, 10-11AM

**Athleta King of Prussia
160 N. Gulph Road, King of Prussia**

Grades: 9-12

Cost: \$8/girl

Get up and get fit with Athleta! Gain the skills to customize a cross training fitness program that is effective and fun. All troops must meet girl-adult ratios for their group. Individual girls must be accompanied by a registered adult. *Includes Cross Training badge.

Entertainment Technology Overnight ●

**FRIDAY, NOVEMBER 22, 6PM - SATURDAY,
NOVEMBER 23, 8AM**

**Reading Public Museum
500 Museum Road, Reading**

Grades: 4-5

Cost: \$49/girl
\$15/adult

Spend the night in the museum and discover the world of entertainment technology! In this exciting overnight adventure, learn about all manners of tech that go into entertainment arts and the cinema! *Includes snack, breakfast, an "I Slept at the Reading Public Museum" fun patch, and Entertainment Technology badge.

S.P.C.yay! ●●●

SATURDAY, NOVEMBER 23, 12:30-2PM

Women's Animal Center
3839 Richlieu Road, Bensalem

Grades: K-5

Cost: \$13/person

Join us for S.P.C.yay! and learn about dogs, cats, and other animals that may be kept as pets. Explore how to care for and interact with these animals and learn the many ways that they talk to us without using words. Make treats and toys for the shelter animals and get a behind-the-scenes tour of the Women's Animal Center, where you'll meet some animals! All troops must meet girl-adult ratios for their group. Individual girls must be accompanied by a registered adult. *Includes a special event patch and completes step 4 of the Pets badge.

Mission Sisterhood ●●

SATURDAY, NOVEMBER 23, 10:30AM-3:30PM
Exeter Community Library
4565 Prestwick Drive, Reading

Grades: 9-12

Cost: \$39/girl

Why do empowered women empower women? Why does it feel so good to band together and stand up for each other? Sisterhood means different things to different people. Together with Kind Living Designs staff, explore how important being a part of a sisterhood is for women all around the globe. Watch the Academy Award winning documentary "Period. End of Sentence" to learn how women and girls in India are ending stigmas and creating lives for themselves. End the day by participating in your Take Action Project. All troops must meet girl-adult ratios for their group. Individual girls must be accompanied by a registered adult. *Includes Mission: Sisterhood Journey award.

Confidence with the Kappa Deltas ●

SUNDAY, NOVEMBER 24, 11AM-2PM

Lehigh University
27 Memorial Drive, Bethlehem

Grades: 6-8

Cost: \$10/girl

Spend the day with the sisters of Lehigh University's Kappa Deltas learning about the different cultures of other countries around the world. Go through a series of stations learning about and making crafts from the various locations you explored, all while building confidence and exploring your own passions! All troops must meet girl-adult ratios for their group. Individual

girls must be accompanied by a registered adult. *Includes International Girls Patch.

Martin Guitar...Music to My Ears ●●●●

MONDAY, DECEMBER 2, 9AM-12PM

Martin Guitar
510 Sycamore Street, Nazareth

Grades: 4-12

Cost: \$7/girl

Spend the morning at C.F. Martin & Co., learning about guitars and the family business. During a Girl Scout exclusive factory tour, you will witness the exquisite craftsmanship that goes into each and every guitar they manufacture. A guided tour of the museum will describe how events in world history defined music and Martin history over the last 180 years. Put your musical skills to the test on "The Play Me Wall," where you can play new guitar models and some of Martin's best-known and top-selling guitars. No guitar or musical knowledge required! All troops must meet girl-adult ratios for their group. Individual girls must be accompanied by a registered adult. *Includes Martin Guitar patch and completes steps 1 and 3 of Junior Musician badge. Great supplemental activity for Cadette Woodworker badge.

Model Car Mechanics ●

SATURDAY, DECEMBER 7, 10AM-12PM

Mad Science @ Fitzpatrick Rec Center
12501 Torrey Road, Philadelphia

Grades: K-1

Cost: \$20/girl

Investigate mechanics and the role that they play in our everyday lives. Learn about forces and discover that simple machines make work easier by allowing us to push and pull less strenuously - but over a longer distance. Apply the concepts you learned at home with the Drag Racer, a car model complete with wheels and axles! All girls must meet girl-adult ratios for their group. Individual girls must be accompanied by a registered adult. *Includes Model Car Design Challenge badge.

Hoot Hike ●●

SATURDAY, DECEMBER 7, 6-8PM

Pool Wildlife Sanctuary
3701 Orchid Place, Emmaus

Grades: K-3

Cost: \$16/girl
\$6/adult

Wandering the trails on a winter night in search of hidden owls calling from an evergreen tree never gets old! Join the

Wildland Conservancy's owl experts as they lead a hike through the woods to see these fascinating nocturnal birds' homes. You'll meet live owls and discover some amazing facts about their calls, behavior, and anatomy. All troops must meet girl-adult ratios for their group. Individual girls must be accompanied by a registered adult.

Laugh Out Loud ●

SATURDAY, DECEMBER 7, 4:30-9PM

ComedySportz
The Playground @ the Adrienne
2030 Sansom Street, Philadelphia

Grades: 6-8

Cost: \$36/girl
\$15/adult

Have you ever made someone laugh so hard his or her stomach hurt? Join the comedians of ComedySportz Philly and get silly as you learn the secrets of improvisational comedy. You'll build communication skills and explore the keys of becoming a confident performer: spontaneity, active listening, storytelling, character development, and teamwork. After the workshop, take a brief break for dinner and then sit back while the improv masters make you burst with laughter. Workshop 4:30-6 p.m., Show at 7:30 p.m. All troops must meet girl-adult ratios for their group. Individual girls must be accompanied by a registered adult. *Includes Public Speaker badge.

Product Designers ●

SUNDAY, DECEMBER 8, 3-6PM

The Handwork Studio
35 N. Narberth Ave, Narberth

Grades: 4-5

Cost: \$23/girl

Looking to add some style to your winter wardrobe? Join us in decorating and machine-sewing your very own fleece hats and scarves just in time for the change of seasons. All troops must meet girl-adult ratios for their group. Individual girls must be accompanied by a registered adult. *Includes Handwork Studio patch and Product Designer badge.

Animals in Winter ●

SATURDAY, DECEMBER 14, 10-11:30AM

Perkiomen Watershed Conservancy
1 Skippack Pike, Schwenksville

Grades: K-1

Cost: \$14/girl

Our local animals have a variety of physical and behavioral adaptations to help them

survive the winter. Beginning with a story told by candlelight, you will take a closer look at the different ways our local wildlife gets through the cold winter season. Examine specimens of two of our local hibernators, the groundhog and the chipmunk, learn how they prepare for hibernation, and what changes happen to them while they hibernate. End the morning by creating a special winter treat for our local birds! All troops must meet girl-adult ratios for their group. Individual girls must be accompanied by a registered adult. *Completes the Birdbath Award from the Three Cheers for Animals journey.

Extreme First Aid ●●

SATURDAY, JANUARY 4, 9AM-11:30AM

**Paoli Hospital
255 W. Lancaster Avenue, Paoli**

Grades: 9-12

Cost: \$13/girl

As a Girl Scout, you're on the go - home, school, clubs, and activities! Wherever you are, you never know when you'll find yourself in the middle of an emergency. Would you know what to do? Join the Paoli Hospital staff and find out how to differentiate between minor and major injuries. Learn how to provide emergency treatment for life-threatening situations. You'll also complete the "Stop the Bleed" program as you learn the skills and basic tools to stop uncontrollable bleeding in an emergency situation. All troops must meet girl-adult ratios for their group. Individual girls must be accompanied by a registered adult. *Includes First Aid badge.

Cross-training ●

SATURDAY, JANUARY 11, 10:30AM-12PM

**Capital Blue Store
2845 Center Valley Parkway, Center Valley**

Grades: 9-10

Cost: \$10/girl

Want to get into a fitness routine but don't know where to start? Maybe you love the gym and exercising but want to learn new workouts to add variety to your routine. Whatever your reason is, physical activity is important for your health! Come to Capital Blue and learn new exercises, create your own routine, and be inspired by fitness. All troops must meet girl-adult ratios for their group. Individual girls must be accompanied by a registered adult. *Includes Cross Training badge.

Daisy Space Explorer: Moon & Stars ●

SATURDAY, JANUARY 11, 10:30-11:30AM

Snapology @ West Lawn - Wyomissing Hills Library

101 Woodside Ave, West Lawn

Grades: K-1

Cost: \$20/girl

Using LEGO® bricks, work both individually and in groups to learn about and build models of your favorite celestial neighbors, the moon and stars. Learn about and discuss constellations, moon phases and more! All troops must meet girl-adult ratios for their group. Individual girls must be accompanied by a registered adult. *Includes Space Science Explorer badge.

Playing the Past Overnight ●

FRIDAY, JANUARY 10, 6:30PM - SATURDAY, JANUARY 11, 9AM

**Independence Seaport Museum
211 S. Columbus Blvd, Philadelphia**

Grades: 4-5

Cost: \$58/girl
\$50/adult

Step back in time for one night at Independence Seaport Museum. Be transported to the turn of the century, where you will discover what it was like to be an immigrant traveling to Philadelphia through interactive activities. Learn about the hardship's families faced when moving to a new world and what it took to become an American. All troops must meet girl-adult ratios for their group. Individual girls must be accompanied by a registered adult. *Includes Playing the Past badge.

Airplane Rescue ●

SATURDAY, JANUARY 11, 10AM-11:30AM

**Engineering for Kids at Camp Shelly Ridge
Camp Shelly Ridge, Miquon**

Grades: K-1

Cost: \$27/girl

Robots are fun, but did you know they can be helpful too? Jump into robotics using LEGO WEDO robots. Using LEGO bricks, you'll build an airplane rescue. Then, learn how to program and operate your creations using a laptop! All troops must meet girl-adult ratios for their group. Individual girls must be accompanied by a registered adult. *Includes What Robots Do badge.

Winter Wildlife ●●●

SATURDAY, JANUARY 11, 11AM-1PM

**Pennypack Environmental Center
8600A Verree Road, Philadelphia**

Grades: 2-5

Cost: \$8/girl
\$5/adult

Discover what's going on at the nature sanctuary this winter as you learn about birds and other winter wildlife in the park, as well as the signs they leave behind. Learn to use binoculars, dissect owl pellets and make a craft to help feed the wildlife. All troops must meet girl-adult ratios for their group. Individual girls must be accompanied by a registered adult.

Courageous Climbers ●●●●

SATURDAY, JANUARY 11, 9AM-12PM

**Doylestown Rock Gym
3853 Old Easton Road, Doylestown**

Grades: 6-12

Cost: \$24/girl

Feed your hunger for adventure as you strap on your harness and climb on! Learn about bouldering safety, harnessing and knot tying. Then, put your skills to the test as you scale the gym walls. All troops must meet girl-adult ratios for their group. Individual girls must be accompanied by a registered adult. *Includes Doylestown Rock Gym event patch.

It's a Girltopia ●●

SATURDAY, JANUARY 11 AND SATURDAY, JANUARY 18, 1-3:30PM

**Exeter Community Library
4565 Prestwick Drive, Reading**

Grades: 9-12

Cost: \$39/person

What is your vision for your sisters in this world? Learn about young girls around the world who are sharing their passion for creating social change. Get creative with the staff of Kind Living Designs as you learn to use art as an outlet for sharing information and creating social change. What kind of leader are you and what role will you play in taking action? Use design-thinking skills to be empowered to reach your full leadership potential! End the program by completing your Take Action Project. All troops must meet girl-adult ratios for their group. Individual girls must be accompanied by a registered adult. *Includes Girltopia Journey award. Girls must attend both sessions to receive awards set.

Fantastic Fliers ●

SATURDAY, JANUARY 11, 10AM-12PM

Mad Science @ Fitzpatrick Rec Center
12501 Torrey Road, Philadelphia

Grades: 2-3

Cost: \$20/girl

Fantastic fliers will fly you through flight and aerodynamics basics! Discover the four forces that affect flight: lift, thrust, drag, and gravity. Make and test various paper airplanes, roto-kites, and loop-n-hoops. All girls must meet girl-adult ratios for their group. Individual girls must be accompanied by a registered adult. *Includes Fling Flyer Design Challenge badge.

Express Yourself ●

SUNDAY, JANUARY 12, 3-5PM

The Handwork Studio
35 N. Narberth Avenue, Narberth

Grades: 2-3

Cost: \$15/girl

Emotions can sometimes be hard to talk about, but art and handicrafts can make it easier. Create your own emoji-inspired expression, then sew, needle felt, and stuff a two-sided pillow. All troops must meet girl-adult ratios for their group. Individual girls must be accompanied by a registered adult. *Completes step 4 of My Best Self badge.

Eco Explorer ●

SATURDAY, JANUARY 18, 1-4PM

Poolside Wildlife Sanctuary
3701 Orchid Place, Emmaus

Grades: 6-8

Cost: \$23/girl
\$7/adult

Climate change is one of the greatest threats to the planet's biodiversity that we are facing today. See firsthand the effects of rising tides as you manipulate moisture with the conservancy's augmented reality sand table. Use a CO2 chamber to determine carbon emissions created by cars. Then, bring the crisis to a local level on a climate change hike and learn how personal choices can make a difference. All troops must meet girl-adult ratios for their group. Individual girls must be accompanied by a registered adult. *Includes Wildlands Conservancy Jr. Naturalist patch and Eco Trekker badge.

Girl Power ●

SUNDAY, JANUARY 19, 10:30AM-4:30PM

Delaware Valley University
700 E. Butler Avenue, Doylestown

Grades: 4-5

Cost: \$34/girl

Girls have the power! Join the staff of Girls Empowered to explore who you are, including the different roles you play every day and the roles you want to take on in the future. Meet successful women in the community and learn about their jobs and experiences. You'll develop the skills to become a successful leader. Uncover the stereotypes girls are confronted with and take action to end them. Leave ready to inspire others to try on their dream roles, too! All troops must meet girl-adult ratios for their group. Individual girls must be accompanied by a registered adult. *Includes a snack and the aMUSE Reach Out!, Speak Out!, and Try Out! award set.

Junior Citizen Scientists ●

SATURDAY, JANUARY 25, 10AM-1PM

Bowman's Hill Wildflower Preserve
1635 River Road, New Hope

Grades: 4-5

Cost: \$30/girl
\$5/adult

Science is super fun! Observe and analyze data just like a scientist and then capture new data that will be used by professional scientists to answer the big challenge questions that are integral to the scientific endeavor today! You'll be inspired to take action in your community and share what you've learned! All troops must meet girl-adult ratios for their group. Individual girls must be accompanied by a registered adult. *Includes the Think Like a Citizen Scientist Journey award.

College All-Stars ●●

SATURDAY, JANUARY 25, 12-3PM

YSC Academy
983 Old Eagle School Road, Suite 605, Wayne

Grades: 9-12

Cost: \$5/girl

Be a college all-star and earn your College Knowledge badge! Learn about the college search process, visits, applying to schools, financial aid, and the college decision-making process. Discover how to find the best fit for you, develop effective and healthy habits for studying and stress-management, and bust some myths about college in the process! All troops must meet girl-adult

**GRADE LEVEL
ICONS**
take a look at the colored dots
at the beginning of each program
in this guide to quickly tell which
grade levels can participate.

ratios for their group. Individual girls must be accompanied by a registered adult. *Includes College Knowledge badge for Ambassadors.

Lunar Learners ●

SATURDAY, JANUARY 25, 3:30-5PM

Please Touch Museum
4231 Avenue of the Republic,
Philadelphia

Grades: K-1

Cost: \$29/girl
\$20/adult

Prepare for blast-off! Join educators at the Please Touch Museum to learn all about outer space and the moon. Explore what it means to be a space explorer, learn about the phases of the moon, and discover how cultures around the world understand the moon and the lunar cycle. All troops must meet girl-adult ratios for their group. Individual girls must be accompanied by a registered adult. *Includes Space Science Explorer badge. and admission to the museum 9am-5pm.

Climb On! ●●●

SATURDAY, JANUARY 25, 1:30-4:30PM

Philly Rock Gym Fishtown
2412 E. York Street, Philadelphia

Grades: 6-12

Cost: \$30/girl

Feed your hunger for adventure as you strap on your harness and climb on! Learn how to tie safety knots, apply a harness, and belay alongside Philly Rock Gym staff. Then, put your skills to the test as you scale the gym walls! Helmets will be provided for all girls and must be worn while climbing. All troops must meet girl-adult ratios for their group. Individuals girls must be accompanied by a registered adult. *Includes Philly Rock Gym patch.

Junior Detective ●

THURSDAY, JANUARY 30, 6:30-8:30PM

Alvernia University

500 Saint Bernardine Street, Reading

Grades: 4-5

Cost: \$10/girl

Let's investigate and explore the science of catching criminals. Try your hand in a crime scene and use evidence to figure out who committed the crime. You'll investigate DNA, fibers, and many other techniques that detectives use to find the bad guys! All troops must meet girl-adult ratios for their troop. Individual girls must be accompanied by an adult. *Includes Detective badge.

Robot Sensor Design ●

SATURDAY, FEBRUARY 1, 10AM-12:30PM

**Engineering for Kids at Camp Shelly Ridge
Camp Shelly Ridge, Miquon**

Grades: 6-8

Cost: \$38/girl

Are robots really taking over the world? Join Engineering for Kids and find out! You'll design a touch sensor and program a computer that can respond to the newly designed sensor. Then, test out your robotics skills! All troops must meet girl-adult ratios for their group. Individual girls must be accompanied by a registered adult. *Includes Programming Robots badge.

Eating for You! ●

SATURDAY, FEBRUARY 1, 10:30AM-12PM

Capital Blue Store

2845 Center Valley Parkway, Center Valley

Grades: 6-8

Cost: \$10/girl

Let your inner beauty shine through! Join Capital Blue and learn all about good nutrition. Find out which foods affect your skin, stress level, and even your sleeping habits! All troops must meet girl-adult ratios for their group. Individual girls must be accompanied by a registered adult. *Includes Eating for You badge.

Tree-mendous Trees ●

SATURDAY, FEBRUARY 1, 11AM-12:30PM

Scott Arboretum

500 College Avenue, Swarthmore

Grades: 6-8

Cost: \$10/girl

It's a bird, it's a plane....it's a tree! Join Scott Arboretum, grab your naturalist hat, and get ready to learn about trees! From the shade to the science, from the fruit to the forest,

and the legends to the lumber - to know trees is to love them! Explore the connection between people and trees and learn how to make them thrive! Dress in warm layers! All troops must meet girl adult ratios for their group. Individual girls must be accompanied by a registered adult. *Includes Trees badge.

Kick Flip ●●●●

SATURDAY, FEBRUARY 1, 2-4PM

Skateboard Academy of Philadelphia

3245 Amber Street, 4th floor, Philadelphia

Grades: 4-12

Cost: \$24/girl

You'll flip over this program! Learn the basics of how to ride and stay safe on a skateboard alongside instructors at The Skateboard Academy of Philadelphia. Identify the parts of a skateboard, get tips on pushing, turning, stopping, and practice some basic tricks. Helmets and skateboards are available to use but you may bring your own. Flat bottom sneakers recommended. All troops must meet girl-adult ratios for their group. Individual girls must be accompanied by a registered adult.

AMAZING Relationships ●

SUNDAY, FEBRUARY 2, 10:30AM-4:30PM

Girls Empowered

Hatfield Township Admin Building

1950 School Road, Hatfield

Grades: 6-8

Cost: \$34/girl

Want to develop the skills to have AMAZING relationships? Join the staff of Girls Empowered and learn the qualities of healthy versus unhealthy relationships, acquire the skills to effectively overcome friendship challenges and peer pressure, and learn how to handle bullying. Gain tips on how to be an effective leader and the importance of having strong interpersonal skills in the "real world". End the day by creating a Take Action project to help prevent bullying in your community. All troops must meet girl-adult ratios for their group. Individual girls must be accompanied by a registered adult. *Includes snack and aMaze journey award.

911 What's Your Emergency? ●

SATURDAY, FEBRUARY 8, 9AM-12:15PM

Paoli Hospital

255 W. Lancaster Avenue, Paoli

Grades: 2-3

Cost: \$13/girl

Do you know what to do in the event of a medical emergency? Do you want to

learn how to take care of the common types of injuries? Join us as we take you on the journey of first aid. Create your own first aid kit, talk to members of our hospital medical team, meet Emergency Medical Service First Responders and practice your new skills. All troops must meet girl-adult ratios for their group. Individual girls must be accompanied by a registered adult. *Includes First Aid badge.

Colonial Foodways ●

SATURDAY, FEBRUARY 8, 10AM-12PM

Washington Crossing Historic Park

1112 River Road, Washington Crossing

Grades: 4-5

Cost: \$30/girl

\$23/adult

Take a fun-filled trip back in time! Learn how to prepare colonial waffles, churn your own butter and create and sample colonial teas. You'll even get to cook and eat your own meal! All troops must meet girl-adult ratios for their group. Individual girls must be accompanied by a registered adult. *Includes Simple Meals badge.

Lupe Petal ●

SATURDAY, FEBRUARY 8, 10:30-11:30AM

Capital Blue Store

2845 Center Valley Parkway, Center Valley

Grades: K-1

Cost: \$5/girl

Daisies, do you know what it takes to be honest and fair? Read Lupe's Story and then come to Capital Blue to have fun and learn why rules are needed for games and sports. Practice how to be a good sport and encourage your teammates to try their best! All troops must meet girl-adult ratios for their group. Individual girls must be accompanied by a registered adult. *Completes requirements for the Lupe Petal.

Maple Sugaring ●●

SATURDAY, FEBRUARY 8, 1-2:30PM

Wissahickon Environmental Center

300 W. Northwestern Avenue, Philadelphia

Grades: 2-5

Cost: \$10/girl

Learn how trees are tapped to make maple syrup, help with the process, and taste a pancake covered with our own maple syrup. All troops must meet girl-adult ratios for their group. Individual girls must be accompanied by a registered adult.

Life is aMaze! ●

SATURDAY, FEBRUARY 8, 10:30AM-3:30PM

Kind Living Designs
Exeter Community Library
4565 Prestwick Drive, Reading

Grades: 6-8

Cost: \$39/girl

You'll be amazed at what you can do! Through games and activities, explore how to have open and honest friendships and steer clear of peer pressure. Learn how to handle your emotions, manage conflicts, and bring inner peace to yourself and your relationships. Get to take part in your Take Action Project at the end of the day. All troops must meet girl-adult ratios for their group. Individual girls must be accompanied by a registered adult. *Includes aMaze Journey Award.

Robot Inventors ●

SATURDAY, FEBRUARY 15, 10AM-12PM

Murphy Recreation Center
300 W. Shunk Street, Philadelphia

Grades: 2-3

Cost: \$29/girl

Are robots really taking over the world? Join Engineering for Kids to find out! Using the Engineering Design Process, build a prototype of the robot to solve a real time problem. You'll also learn how to operate your creation using a laptop! All troops must meet girl-adult ratios for their group. Individual girls must be accompanied by a registered adult. *Includes Designing Robots badge.

Animal Habitats ●

SATURDAY, FEBRUARY 15, 10AM-3PM

Pool Wildlife Sanctuary
3701 Orchid Place, Emmaus

Grades: 4-5

Cost: \$28/girl
\$10/adult

Whether an animal calls water, meadow, or forest home, they live in a watershed and are affected by the purity of the water that travels through it. Spend the day meeting live animals and learning what each requires to locate a suitable habitat to call home. Leave with a paint tray model watershed of your creation and means to assess your home, school or other community space. You have what you need to lead the way to create positive change! All troops must meet girl-adult ratios for their group. Individual girls must be accompanied by a registered adult. *Includes Wildlands Conservancy Jr. Naturalist patch and Animal Habitats badge.

Cybersecurity Super Sleuths ●●

MONDAY, FEBRUARY 17, 9:30AM-12PM

Securtiy Risk Advisors
1760 Market Street, Philadelphia

Grades: 2-5

Cost: \$10/girl

Do you love to solve puzzles, figure out mysteries, and break codes? Then you'll love learning about cybersecurity—and how you can use your skills to keep people safe. Discover how computers work, how to create layers of security, and tips and tricks to use real life safety rules when you go online. All troops must meet girl adult ratios for their group. Individual girls must be accompanied by a registered adult. *Includes Cybersecurity Basics badge.

Blast Off! ●●

THURSDAY, FEBRUARY 20, 6-8PM

Alvernia University
500 Saint Bernardine Street, Reading

Grades: 2-5

Cost: \$10/girl

Join Alvernia to learn about the stars and planets in the night sky! You will discover all about the planets of our solar system, the phases of the moon, and star constellations through hands-on activities! All troops must meet girl-adult ratios for their troop. Individual girls must be accompanied by an adult. *Includes Space Science Adventurer badge.

Solve the Case ●

SATURDAY, FEBRUARY 22, 10AM-12PM

Mad Science @ Fitzpatrick Rec Center
12501 Torrey Road, Philadelphia

Grades: 4-5

Cost: \$20/girl

Use science to crack the case! The crime happens just before the bake-off. Mr. Somebody sabotaged Mr. Baker's cookie, and stole his recipe. You will examine fingerprints, mystery powders, ink samples, and teeth impressions. Practice your memory skills and after analyzing all the evidence, help pinpoint the perpetrator! All girls must meet girl-adult ratios for their group. Individual girls must be accompanied by a registered adult. *Includes Detective badge.

The Power of Sisterhood ●●

SATURDAY, FEBRUARY 22, 10:30AM-3:30PM

Kind Living Designs
Exeter Community Library
4565 Prestwick Drive, Reading

Grades: 9-12

Cost: \$39/girl

It's important for girls to understand the difference between healthy and unhealthy relationships - friendships and romantic relationships. One of the many sisterhood issues facing girls and women today is dating violence. Together with Kind Living Designs, learn more about the statistics, and the how's and whys around abuse and harassment. How do you find your voice for yourselves and others? What are the red flags in any relationship that require you to learn how to set smart and safe boundaries? What do healthy behaviors in relationships look like? Working with curriculum from the One Love Foundation, you will be educated and empowered to affect change in your community through content, conversations and community action. All troops must meet girl-adult ratios for their group. Individual girls must be accompanied by a registered adult. *Includes Mission: Sisterhood Journey award.

Maple Sugaring ●●●●●●●●

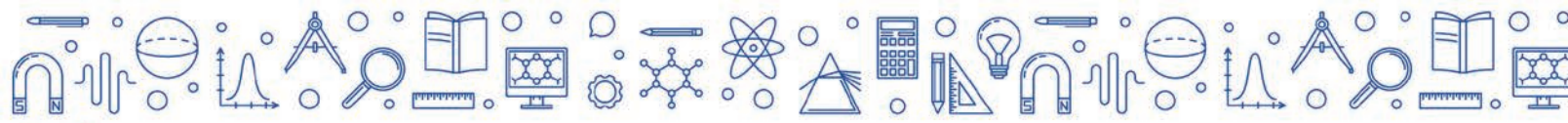
SATURDAY, FEBRUARY 29, 1-2:30PM
SNOW DATE: SATURDAY, MARCH 7, 1-2:30PM

Tyler Arboretum
515 Painter Road, Media

Grades: K-12

Cost: \$14/girl

From tree to table, find out how maple sap becomes maple syrup. Learn how to identify a sugar maple, practice tapping a tree, explore the evaporation process, and taste the difference between freshly tapped sap and real maple syrup! All troops must meet girl-adult ratios for their group. Individual girls must be accompanied by a registered adult. *Completes Step 1 of the Trees badge for Cadettes.



WISH LIST

Write down which programs you would like to do this year! Share this page with your parents!

PROGRAM NAME

PAGE #

1.

2.

3.

4.

5.

6.

7.

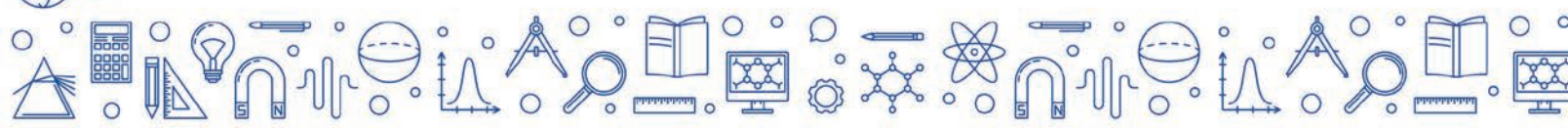
8.

9.

10.

11.

12.



Registration Information

Girls can participate in any day program individually (unless otherwise noted), with a group, or as a troop. Special efforts are made to welcome all girls. Please note, while we may be able to accommodate additional adults in certain situations, program space is reserved for girls.

Program registrations are accepted online.

GSEP does not accept registrations by phone.

HOW TO REGISTER FOR PROGRAMS ONLINE

1. If you are registering for a members-only event or program, you must first purchase or renew your membership by logging into MyGS.
2. 24 hours after purchasing or renewing your membership, visit us at gsep.org and click PROGRAM/EVENT REGISTRATION.
3. Enter your username and password. Or, if you're a first-time user or haven't used the system since August 2013, activate your account by clicking the NEW ONLINE ACCOUNT button.
4. If you receive an alert to contact us, please do so. Your record may be incomplete, you may have a duplicate record, or you may not be linked to your girl's record.
5. Click on the ACTIVITIES tab.
6. Search for the program you want using the various search features.
7. Click on the program name and review the details.
8. Click REGISTER NOW.
9. Select the registrant and click CONTINUE.
10. Enter additional information as requested, then click CONTINUE.
11. Confirm your order details and click CHECKOUT; consider making a donation or select the "not at this time" option, click CONTINUE.
12. Enter your credit card information and click PROCESS MY ORDER.

IMPORTANT POINTS FOR PARENTS, GUARDIANS & VOLUNTEERS

- Adult spaces in programs are intended only for the number of adults necessary to meet the girl-adult ratios, unless otherwise indicated. Chaperoning adults are free unless otherwise indicated by a *per person* or *per adult* price for the program. All adults must be registered for the program.
- All girls attending a program or event must be registered Girl Scouts. Girls new to Girl Scouts can register as a new member online at gsep.org through MyGS.
- Council-sponsored programs are designed for specific age/grade levels. Please only register for programs that are in your age/grade level.
- Leaders, parents, and guardians must make arrangements to leave other children at home. Additional children and/or family members are not permitted to attend any GSEP program.
- **All GSEP Sponsored Programs:** According to *Volunteer Essentials*, all volunteers participating in the Girl Scout movement shall meet GSUSA membership standards, which include committing to the Girl Scout Promise, accepting the Girl Scout Law, and registering annually through the Council as members of the Girl Scout movement. Effective January 1, 2014, prior to registering for all programs sponsored by GSEP, adults who are interested in attending must have a current membership. This applies to all of the programs advertised in *Spark* or via the GSEP website or other communication. Cost of registration is \$25 and is in addition to the cost of the program. Adults can register online.
- **Trips & Overnight Programs:** According to *Volunteer Essentials*, when girls go on trips and overnight programs, the group must have at least two unrelated, registered, cleared, and trained adult volunteers. Adults who attend overnight programs or share GSEP property at the same time girls are in attendance need to be cleared and registered to ensure the utmost safety of the girls. Effective January 1, 2014, in

Registration questions?

Contact:

215.564.2030
memberservices@gsep.org
gsep.org

addition to becoming a registered adult member of Girl Scouts, any adult who registers for an overnight program with GSEP will have to successfully complete the criminal background check process prior to program registration.

1. Go to MyGS and register as an adult member.
2. Choose a volunteer role.
3. Check your email for confirmation and next steps to complete the criminal background check process.

• Due to planning issues and safety concerns, walk-in girl and adult registration cannot be accepted at any GSEP event.

REGISTRATION DEADLINES Registrations are accepted until the program is full or one week prior to the program date, whichever comes first. Please allow at least four weeks lead time from the program date for processing of paper registration forms.

CONFIRMATIONS Confirmation packets are sent via email the first business day after registration closes. If registration closes on a Saturday or Sunday, you should expect the confirmation the following Monday.

SPACE & ATTENDANCE Program space is limited. Attendance capacity is based on the needs of the program itself and cannot be adjusted due to late registration, transfer requests, troop needs, etc. Program capacity and space availability can be viewed online. Badges and patches will only be given out to girls who are in attendance.

TROOP REGISTRATION Only approved troop leaders/co-leaders can register current troop members using the troop management feature.

PAYMENT Payment for all programs is due in full at the time of registration. Space will not be held for any registration forms submitted without the full payment amount that is due.

REFUNDS Requests for refunds must be submitted in writing to memberservices@gsep.org at least four weeks in advance of the program date for consideration. Refunds are not issued for "no shows" (registrants who do not attend).

Refunds are not issued for cancellations occurring less than four weeks in advance or if numbers are reduced less than four weeks prior to the event.

CANCELLATIONS GSEP reserves the right to cancel an event due to insufficient registration, acts of nature, or other reasons beyond our control. In the event a program is canceled, a full refund will be issued.

Weather-related cancellations: A GSEP staff member will contact you if a program will be cancelled due to weather. When possible, the event will be rescheduled or a refund issued.

For cancellations in advance, email notification will be sent to each registrant. For same day cancellations, an attempt will be made to call the phone number available on record. Phone numbers and emails can be updated at any time through the Program/Event Registration System when you visit your online profile on our website at gsep.org.

OUT-OF-COUNCIL REGISTRATIONS Girls in our neighboring councils are welcome to register for our programs. Email memberservices@gsep.org for paperwork. Registration requests must be submitted at least 4 weeks in advance of the program date. We accept check and credit card payments.